

Luxury Travel
since 1927

EUROPE 2027

Preview

Everything to a T.



River Cruising | Yacht Cruising | Small Ship Expedition Cruising | Land Touring | Small Group Touring

Extraordinary Moments, Expertly Crafted

We're proud to be Australia's leader in luxury travel, committed to delivering unforgettable experiences for our valued guests for almost a century. From the moment you choose to travel with us, rest assured that every detail will be meticulously managed. Whether you choose to explore the majestic rivers of Europe, the untamed wilderness of Australia, or the breathtaking beauty of Canada, Alaska, and beyond, you'll create memories that last a lifetime. Our Travel Experts look after every aspect of your holiday from start to finish, allowing you to fully immerse yourself in each destination.

Everything to a T.



AAT
Luxury Travel
since 1927

APT's Next Century Unfolds



APT has led the way in travel for a remarkable 100 years. From a single Melbourne bus route in 1927 to journeys spanning every corner of the globe, reaching this milestone is no small feat — few ever do. Our centenary reflects an extraordinary legacy of vision, passion and excellence, built across generations.

What began as a humble family business has become a world-renowned travel company. Yet at our core, we remain proudly family-owned, proudly Australian, and as committed as ever to creating unforgettable journeys. As we salute our first century, our sights are firmly set on the next — and we're thrilled to embark on it with you.

1920s

Tram strikes in northern Melbourne inspire Bill McGeary to begin his bus business. One makeshift bus swiftly expands into a fleet servicing numerous routes.



1960s

Bill's son, Geoff McGeary, joins the business and Australian Pacific Coaches is established.



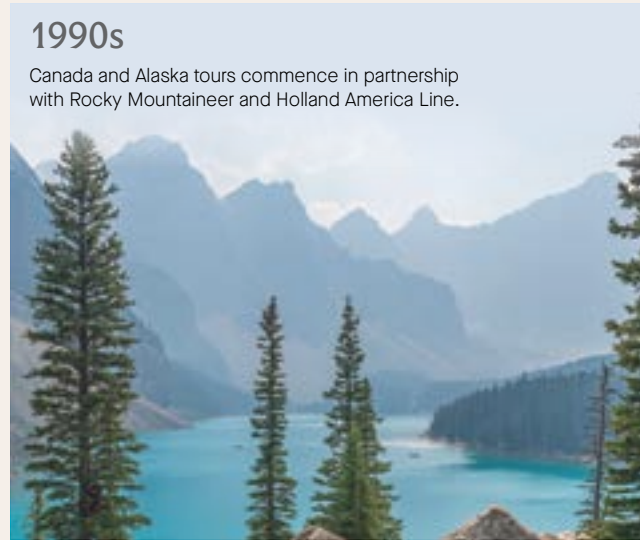
1970s

Australian Pacific Coaches evolves into Australian Pacific Tours. Outback camping trips flourish across Australia and the business offers its first overseas journey to New Zealand.



1990s

Canada and Alaska tours commence in partnership with Rocky Mountaineer and Holland America Line.



2000s

APT establishes three luxury Wilderness Lodges in the Kimberley at Mitchell Falls, Bell Gorge and the Bungle Bungle.



2020s

The world-class river ships, APT Solara and APT Ostara, begin cruising Europe's Rhine, Main and Danube rivers, joining their newly launched stablemates, the Mekong Serenity in Asia, and MS Estrela in Portugal.



**A legacy like no other.
A future without limits.**

Our centenary is more than just a number. It's a rare and remarkable achievement — a testament to the millions of guests we've welcomed, the passionate people who've shaped our story, and the spirit of innovation that has driven us since day one.

As we step into our second century, we're investing in what lies ahead: building new ships, unveiling extraordinary experiences, enhancing our Wilderness Lodge network and continuing to deliver what has defined APT for 100 years — impeccable service, awe-inspiring journeys, and every detail curated to the finest touch.

Join us as we forge ahead — and discover the world like never before with APT.

Lou Tandy (nee McGeary) and Robert McGeary
APT Company Owners



The iconic canals of Amsterdam in the Netherlands

Contents

All-Inclusive Luxury

08 The APT Difference	12 All-Inclusive Luxury
10 Superdeals 2027	14 Travel Styles

Trip Finder

16 Rhine, Main and Danube River Cruising	38 Small Ship Expedition Cruising
30 Douro River Cruising	46 Croatia Yacht Cruising

The Details

56 Terms and Conditions
58 APT Club
59 OneTomorrow



The APT Difference

For a century, APT has been showing the world to our guests. We understand freedom and flexibility are important. That's why when booking with us, we'll support you if plans change, and ensure your health and safety are our highest priority.

All Taken Care Of

Our Travel Experts look after all aspects of your journey with unrivalled care. There's 24/7 emergency support and we'll keep you updated on any travel requirements.

Award-Winning

APT has a 98% guest satisfaction rating. Our awards include the Australian Federation of Travel Agents' Most Outstanding Tour Operator – Global for 2023 and Best River Cruise Operator from 2015-19, and 2023 Best Holiday Operator by Reader's Digest.

World-Class Dining

On board our luxury ships, savour Europe's finest flavours, masterfully curated from locally sourced, seasonal produce. Enjoy a superb selection of regional wine, beer, cocktails and soft drinks.

Experienced Crew and Staff

APT's world-class crews will look after you every step of the way on your journey. From experienced Tour and Cruise Directors and Expedition Teams to expert local guides and onboard Wellness Hosts, APT's crew is there to support your every need.

Australian-Owned

We're proud to be Australia's leader in luxury travel, committed to delivering unforgettable travel experiences to our valued guests for almost a century.

The Best Destinations

When you travel with APT, you'll discover hidden treasures in the world's most exciting destinations. All our experiences are specially curated with exclusive moments unavailable to most.

Travel Styles

We offer a range of travel styles for you to choose from, including River Cruising, Small Ship Expedition Cruising, Yacht Cruising, Land Touring, Small Group Touring and more.

OneTomorrow

OneTomorrow is our charity fund. Our goal is to make a lasting, positive impact on nature and communities through support for environmental and humanitarian causes.

For full details, visit aptouring.com/bookwithconfidence or speak with your APT Travel Expert or local travel agent.

Superdeals 2027

Book early to secure the best Superdeal offer available. Superdeal offers are strictly limited and will sell out.

Book by 28 February 2026*, unless sold out prior – strictly limited

EARLYBIRD SAVINGS*

Save up to \$6,000 per couple*

Save up to \$6,000 per couple on selected River Cruises, Croatia Yacht Cruises, Small Ship Expedition Cruises and Land Tours.

SOLOS SAVE UP TO \$8,500*

Book selected holidays that include a River Cruise of 14 nights or more in a Category P Suite, or a Small Ship Expedition Cruise in a category Penthouse Suite or Penthouse Panorama Suite, and solo travellers can save up to \$8,500.

The offers above can be combined with the following two offers:

EARLY PAYMENT DISCOUNT*

Save up to \$1,400 per couple*

Pay in full 10 months prior to departure and enjoy additional savings of up to \$1,400 per couple.

TRAVEL WITH FRIENDS AND SAVE*

Save up to \$800 per couple*

When six or more people are travelling together and book their trip together at the same time, APT offers additional savings of up to \$800 per couple.

* A limited number of Superdeal offers are available on all itineraries. All Superdeal offers are available until 28 February 2026 unless sold out prior. Only one Superdeal offer per person applies and cannot be combined with any other offer, unless specified. **Earlybird Savings:** Save up to \$6,000 per couple based on EUSSCAC11. **Solo Savings:** Solo savings are available on Category A & P suites on all tours that include a 14-night river cruise, and on Category Penthouse Suite or Penthouse Panorama Suite on EUSSCAC11 and EUMCRSS24. Save \$8,500 per solo traveller on departures in March, July, October and November 2027. Save \$5,600 per solo traveller on all departures from April, May, June, August, September and December 2027.

Stroll the fairytale streets of Rothenburg in Germany

All-Inclusive Luxury

At APT, we make travel effortless. Everything you need is included and organised, so you can rest assured knowing all the details have been taken care of. Our cruises are what we like to call All-Inclusive Luxury, empowering you to explore with total freedom.

Discover picturesque vineyards in Germany

Included on your luxury cruise

The APT Difference

- ✓ New-generation ships elevate river cruising like never before
- ✓ Australian-owned and operated, with programs curated with the discerning traveller in mind

The Suite Life

- ✓ A choice of luxuriously appointed suites
- ✓ Complimentary in-suite dining and minibar*
- ✓ In-room entertainment system

World-Class Dining

- ✓ All meals on board, with a focus on fresh, locally sourced produce
- ✓ Local gourmet fare on APT Solara and APT Ostara
- ✓ Seven dining experiences on APT Solara and APT Ostara – the most dining options among European river ships

Unlimited Beverages

- ✓ All-day complimentary beverages
- ✓ 24-hour tea and coffee service

Personalised Service

- ✓ Dedicated Cruise Director
- ✓ Expert local guides
- ✓ Onboard captain and crew
- ✓ Concierge on APT Solara and APT Ostara

- ✓ European-based operations and support teams

Unforgettable Experiences

- ✓ Curated Signature Experiences
- ✓ Freedom of Choice™ inclusions
- ✓ Onboard entertainment, lectures and demonstrations

A World of Wellness

- ✓ Onboard Wellness Hosts and e-bikes on APT Solara and APT Ostara
- ✓ Swimming pool or whirlpool
- ✓ Fitness Centre and Spa*

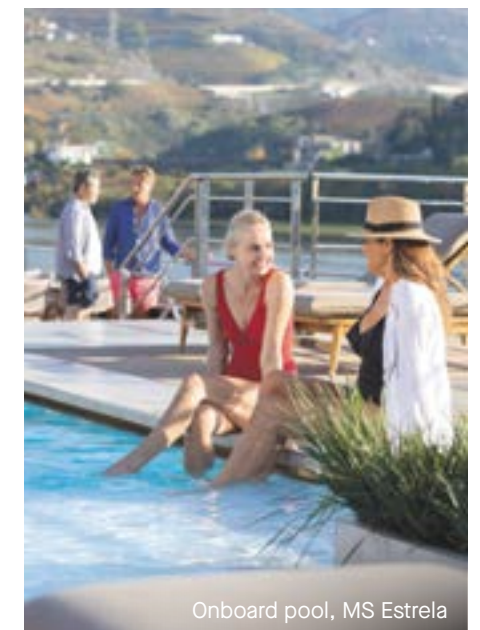
All Taken Care Of

- ✓ All onboard and on-land gratuities
- ✓ Portage
- ✓ Complimentary Wi-Fi
- ✓ Return airport transfers
- ✓ Port charges
- ✓ Audio headsets

*Not available on MS Estrela and MV Lady Eleganza



Savour world-class dining



Onboard pool, MS Estrela

Travel Styles

Experience a new standard in river cruising on Central Europe's waterways. Navigate pristine coastlines on a Small Ship Expedition Cruise. Explore Croatia aboard a luxury yacht. Or uncover the beauty of Europe by coach or on a Small Group Tour. Discover an elevated way of experiencing the world with APT.

Experience relaxed luxury aboard APT Solara

River Cruising

There's nothing more liberating than unpacking once, knowing you don't have to do it again any time soon. Knowing every little detail is taken care of, so you're free to enjoy the cultural, culinary and historical experiences designed exclusively for you. Awake in a new destination each day and dock in the heart of towns and villages. Delight in new luxury river ships on the Rhine, Main and Danube. Boasting world-class dining and spacious suites, the APT Solara and APT Ostara deliver elevated luxury beyond compare. Offering unparalleled comfort and style, the purpose-built MS Estrela promises a spectacular journey along Portugal's Douro River.

Small Ship Expedition Cruising

Glide into the breathtaking fjords of Norway and trace the rugged coastlines of Northern Europe on a Small Ship Expedition Cruise aboard the ultra-luxurious Seabourn Venture. Experience ocean cruising with just 264 guests, and indulge in unmatched luxury with all-veranda suites.

Croatia Yacht Cruising

Cruise along the stunning Adriatic coast to explore the wonders of Croatia and Montenegro aboard your yacht, the MV Lady Eleganza. Start each day amid spectacular scenery, and explore charming coastal villages inaccessible to larger ships.

Land Touring

These journeys are carefully curated to offer the perfect blend of the must-see and the lesser known, designed to combine seamlessly with our river cruises. Traverse Europe by road, then retire to luxurious accommodation in prime locations.

Small Group Touring

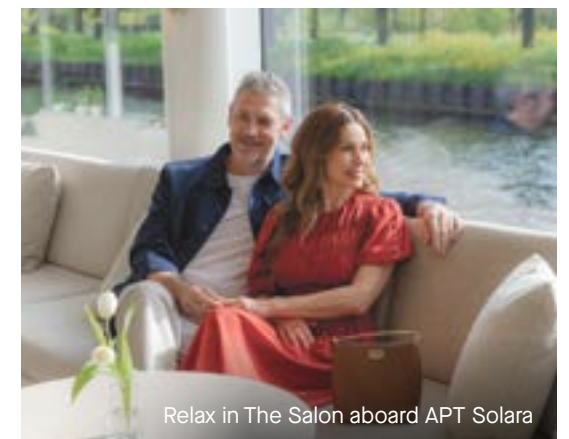
Limited to just 20 guests, Small Group Tours allow you to explore remarkable destinations that larger groups can't access. Experience a more in-depth cultural immersion with a personal touch.



The Douro Valley awaits on board the MS Estrela



The ultra-luxurious Seabourn Venture



Relax in The Salon aboard APT Solara

Rhine, Main and Danube River Cruising

As you cruise along Europe's serene waterways, dock in quaint towns to meet the locals and savour the best regional food and wine. Cycle through the Wachau Valley in Austria, cruise the dramatic Iron Gates, or delve into World War I history with a deeply moving exploration of the Somme battlefields.

Relaxed Luxury On Board

Admire the sunset as you cool off in the open-air pool.
Rejuvenate and revitalise with a massage at the spa.
Embrace life's luxuries on board and enjoy the freedom
to do as much — or as little — as you please.

Grand Staircase on board APT Solara

Abundant Social Spaces

Experience an intimate atmosphere with no more than 154 guests on board and an abundance of shared social spaces. The ships have been thoughtfully designed to ensure guests have the luxury of choice in their home away from home. Curl up with a gripping book in a cosy reading nook or gather in The Salon to learn about local culture and enjoy live music. Relish evening entertainment from our resident entertainers and hear melodies from local artists such as Hungarian Gypsy violinists or members of a Bavarian band.

Upper Sun Deck

Soak up panoramic views from the upper Sun Deck and recline on a comfortable lounge chair with a cocktail in hand. Savour vistas of enchanting castles and riverside villages as people go about their daily lives.

Daystar Deck

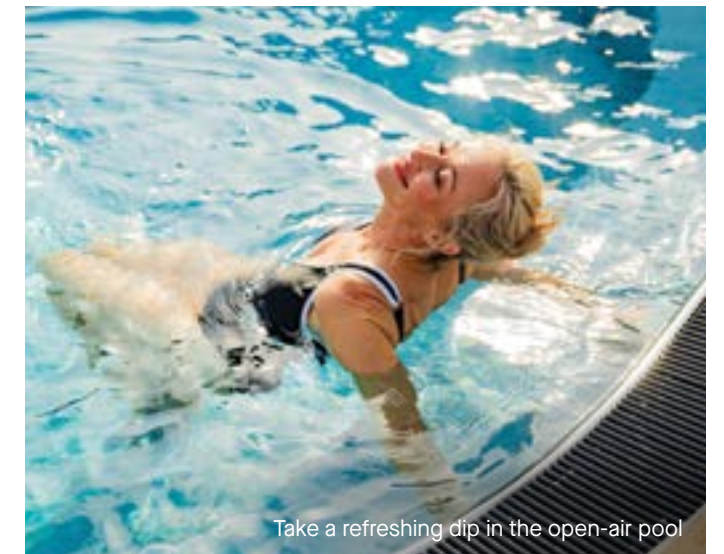
With a rooftop barbecue and bar, an alluring pool, and a lounge area for conversations with new-found friends, the Daystar Deck is the ideal place to relax and unwind under the European sky. Enjoy Mediterranean-style fare on the grill accompanied with fragrant cocktails.

A World of Wellness

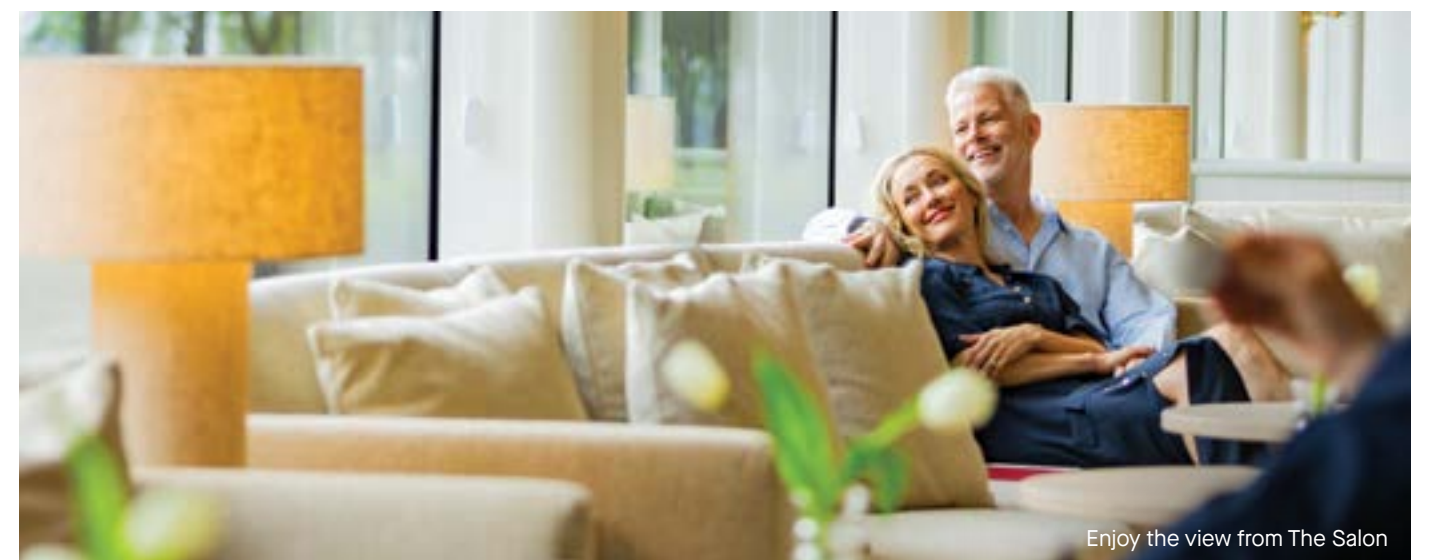
A host of wellness activities are on offer so you can ensure that you'll disembark feeling relaxed and rejuvenated. Keep up your fitness regime at the onboard gym or join your Wellness Host for a morning stretch class, invigorating hike or e-bike ride on shore. Delight in a visit to the onboard hair stylist to freshen your look. Or indulge in a spa treatment and escape to a sanctuary of calm.



Gather with friends at the Conversation Pit



Take a refreshing dip in the open-air pool



Enjoy the view from The Salon

World-Class Dining

Indulge in the luxury of choice with seven exquisite dining experiences on the APT Solara and APT Ostara. With the most dining venues among European river ships, our new-generation fleet elevates the standard in river cruising gastronomy to an unrivalled level.

European-style snacks and local wines at Grüner Bar & Dining

Grüner Bar & Dining

Reminiscent of a neighbourhood wine bar, Grüner Bar & Dining serves seasonal small plates and regional fare, paired with cocktails and fine wines. A cutting-edge hydraulic system lifts the venue to the upper Sun Deck for panoramic views.

Bistro Saison

Bistro Saison is our all-day dining venue. Inspired by the charm of a local bistro, it delivers a European atmosphere with buffets and à la carte breakfast and lunch options, as well as a three-course à la carte dinner in a relaxed, casual setting.

The Owner's Cellar

Experience exclusive fine dining at The Owner's Cellar, seating just 16 guests in an intimate setting. Designed as a one-time-only event, it's a chance to slow down and savour a five-course tasting menu of local produce, perfectly paired with premium wines.

The Daystar Deck

The Daystar Deck serves BBQ-style delights inspired by the sun-soaked Mediterranean, where flame-grilled meats and seasonal salads are served alfresco with Europe as your backdrop.

The Salon

Enjoy light buffet-style breakfast and lunch at The Salon, the ship's social hub, complete with live music in the evenings.

Annie's Table

In the evening, Annie's Table offers a warm, welcoming space dedicated to Anne McGeary, serving home-style European favourites with a three-course menu and regional wines.

In-Suite Dining

In-suite dining offers a selection from Bistro Saison's 'Always Available' menu, letting you enjoy fresh meals in the comfort of your suite.



Dine in elegance at Bistro Saison



Fresh fare at The Salon



Intimate dining awaits in The Owner's Cellar

Suite Escapes

With colour palettes inspired by the seasons, our luxuriously appointed suites offer spectacular riverside scenery and an abundance of in-suite services, cultivating an air of serenity and charm.

Relax in your spacious Owner's Suite

Suites Flourishing with Features

All suites feature an array of thoughtful touches, from complimentary in-suite dining and a minibar to tea and coffee amenities. Stylish Hecker Guthrie interiors, luxury bedding, ample storage, and an en suite with decadent Marie-Stella-Maris toiletries complete the experience, with each suite designed to frame the beauty of Europe's beautiful landscapes.

Owner's Suites

Our most lavish suites offer expansive outdoor balconies and panoramic floor-to-ceiling windows that showcase sweeping views of the ever-changing scenery. Enjoy a separate sitting area that invites you to indulge in private in-suite dining, as well as a fully stocked minibar, complimentary laundry and pressing services, and a rejuvenating spa treatment.

French Balcony Suites

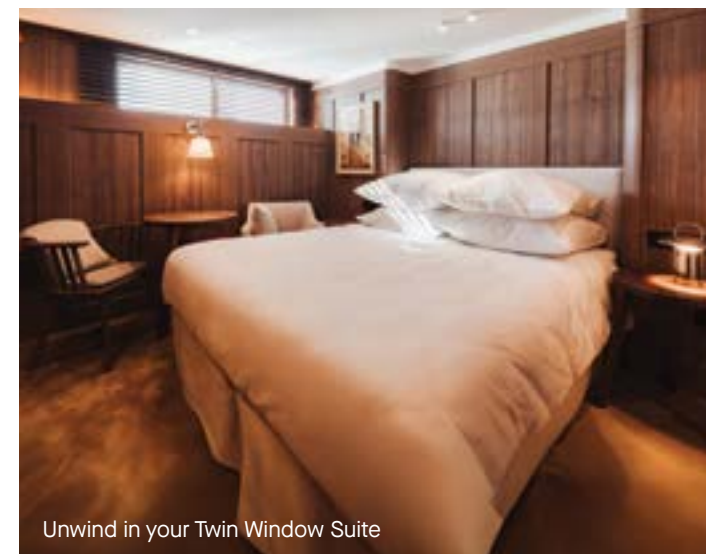
These opulent suites feature electric floor-to-ceiling slide down windows that open with ease to a French balcony, offering ample fresh-air and a light-filled interior. Guests staying in Upper Deck French Balcony Suites will also benefit from a complimentary laundry service.

Twin Window Suites

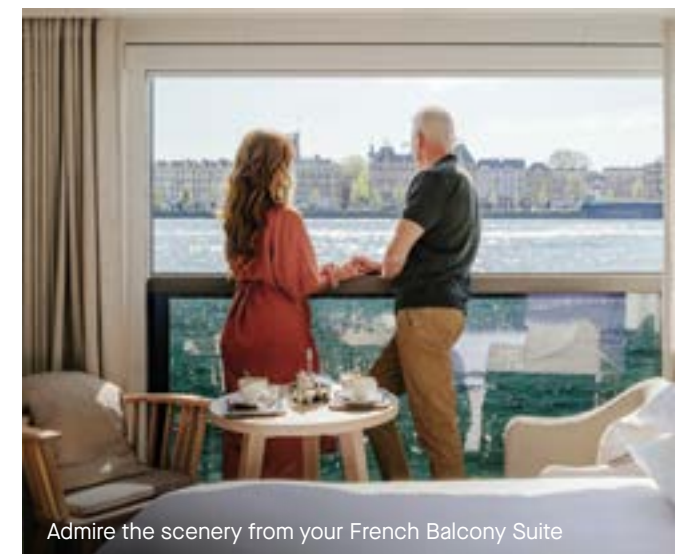
Designed to evoke serenity, our Twin Window Suites combine warm, earthy tones and elegant wooden accents and soft furnishings. The result is a space that surrounds you in comfort and charm, ensuring a peaceful and restful stay.



Enjoy the luxury of your Owner's Suite



Unwind in your Twin Window Suite



Admire the scenery from your French Balcony Suite



Explore glorious Budapest in Hungary

Magnificent Europe

EUMCR15 / Budapest to Amsterdam

Explore Europe's breathtaking waterways on a new-generation luxury river ship

15 Days / 14-Night River Cruise

Ship APT Solara or APT Ostara / Visit 17 places, five countries

Signature Experiences

- Visit Vienna's City Palace for a cocktail party and private performance of classics by Mozart and Strauss.
- Exclusive – Enjoy lunch and a spectacular show featuring songs from *The Sound of Music* at a traditional restaurant on the Gaisberg mountain, overlooking Salzburg.
- Exclusive – In Andernach, go beyond the gates at Namedy Castle, where you'll enjoy a morning tea and piano recital.

Highlights and Inclusions

- ✓ All-inclusive sightseeing experiences in 14 destinations.
- ✓ Enriching Signature Experiences and Freedom of Choice inclusions.
- ✓ A total of 41 meals at your choice of dining locations.
- ✓ All-day complimentary premium onboard beverages.
- ✓ Expert Cruise Director and local guides.
- ✓ In-suite dining and beverage service in all suites.
- ✓ Complimentary onboard Wi-Fi.
- ✓ Transfers, port charges, portage and gratuities.



Prague and Paris City Stays

Extend your journey with three-night stays in Prague and Paris. Wander Prague's cobbled streets and visit Chateau Jemniště. In Paris, discover the Eiffel Tower and the Seine by boat. Search EUMCRPP21 on aptouring.co.nz to find out more.



Itinerary

Day 01: Arrive Budapest, Embark Ship Welcome to Budapest. We'll meet you on arrival and transfer you to your ship. Settle into your suite before getting to know your fellow travellers and APT Cruise Director at a welcome reception. Enjoy Hungarian folk music, local brandy, and artisan meats and cheeses. **D**
14 Nights: APT Solara or APT Ostara.

Day 02: Budapest Set out on a city tour, a culinary tour of the Great Market Hall, or board a funicular to Castle Hill before a walk to Fisherman's Bastion. **BLD**

Day 03: Vienna On arrival in Vienna, take in the city's many landmarks. **BLD**

Day 04: Vienna Choose to visit Schönbrunn Palace, embark on a culinary tour of Vienna's narrow streets, or travel to Bratislava in Slovakia. After dinner, head to Vienna's City Palace for an exclusive cocktail party and private recital. **BLD**

Day 05: Dürnstein, Melk Explore the beautiful town of Dürnstein. Then, choose to cruise or travel on a guided bike ride through the Wachau Valley to Melk. Later, visit Melk Abbey. **BLD**

BLD: Breakfast/Lunch/Dinner

Day 06: Linz, Salzburg, Passau Take a guided tour of Salzburg before being welcomed by a Jagdhornbläser into a traditional restaurant on the Gaisberg mountain. Enjoy a welcome drink before savouring a delicious lunch, followed by a show featuring songs from *The Sound of Music*. **BLD**

Day 07: Regensburg Set out on a guided tour of Regensburg's World Heritage-listed city centre and enjoy a tasting at the city's historic sausage kitchen. Alternatively, take a guided bike ride to the Walhalla memorial. **BLD**

Day 08: Nuremberg Choose to tour Nuremberg's WWII sights or medieval architecture. Then, continue cruising on the Main-Danube Canal while indulging in a Bavarian beer, sausage and pretzel tasting on the Daystar Deck. **BLD**

Day 09: Bamberg Relax on board as you cruise to Bamberg. On arrival, explore Bamberg's World Heritage-listed Old Town with an expert local guide. **BLD**

Day 10: Würzburg Enjoy a range of sightseeing options today. Perhaps visit the Würzburg Residence or explore medieval Rothenburg. Alternatively, hike to the Marienberg Fortress or delight in a tour and tasting at a Franconian winery and whisky distillery. **BLD**

Day 11: Miltenberg Step ashore in Miltenberg today and set out on your preferred sightseeing activity. Enjoy a

guided walking tour and liqueur tasting, or visit a local monastery. **BLD**

Day 12: Rüdesheim Dock in Rüdesheim, where you'll choose from a gondola ride, a visit to Siegfried's Mechanical Musical Instrument Museum, or a wine tasting. This afternoon, you'll approach what is known as the most beautiful stretch of the Rhine River. **BLD**

Day 13: Andernach On an exclusive visit to Namedy Castle, go beyond the gates and wander about the rooms and grounds. Here, you'll enjoy a morning tea where a pianist sets the mood. **BLD**

Day 14: Amsterdam Choose to embark on a glass-top boat canal cruise or visit a local cheese store for a tasting. Alternatively, join a guided bike ride to Durgerdam before a trip to the Street Art Museum. On select spring departures, you also have the option to visit Keukenhof Gardens. Tonight, savour fresh locally sourced oysters with regional sparkling wine. **BLD**

Day 15: Disembark Ship, Depart Amsterdam Disembark this morning and be transferred to the airport. **B**

For more information about Freedom of Choice sightseeing options, visit [aptouring.co.nz](https://www.aptouring.co.nz)

Trip from \$6,795 per person, twin share

SAVE UP TO \$7,400 PER COUPLE*			
2027 Dates and Prices (NZ\$) Per person, twin share	Cabin Category	Early Booking Price From*	Standard Price From
15 Days Budapest to Amsterdam (EUMCR15)			
Mar. 10, 10, 24, 24 Nov. 3, 3, 17, 17	Twin Window	\$6,795	\$10,495
	French Balcony	\$10,995	\$14,695
	Owner's Suite	\$14,895	\$18,595
Apr. 21, 21 Oct. 20, 20	Twin Window	\$9,095	\$12,795
	French Balcony	\$13,295	\$16,995
	Owner's Suite	\$17,195	\$20,895
May 5, 5, 19, 19 Jun. 2, 2, 16, 16, 30, 30; Jul. 14, 14, 28, 28 Aug. 11, 11, 25, 25; Sep. 8, 8, 22, 22 Oct. 6, 6; Dec. 1, 1, 15, 15	Twin Window	\$10,995	\$14,695
	French Balcony	\$15,195	\$18,895
	Owner's Suite	\$19,095	\$22,795

*Early Booking Pricing includes Earlybird Savings and/or Early Payment Discount. For full terms and conditions, visit [aptouring.co.nz](https://www.aptouring.co.nz) and search trip code.
Solo travellers add on from \$6,600, please enquire for details.
Please note: Bold dates indicate itinerary operates in reverse (EUMCR15). Prices listed are indicative and may not be available on all departure dates listed. Prices are seasonal and are subject to change. Prices are based on Cat. E Twin Window Suite, Cat. A French Balcony Suite and Cat. Owner's Suite. See terms and conditions towards the back of the brochure.

For a detailed day-by-day itinerary, up-to-date prices, savings and departure dates, search **EUMCR15** on [aptouring.co.nz](https://www.aptouring.co.nz)

Reverse Journey
This journey is also available in reverse. Begin your holiday in Amsterdam and finish in Budapest. Search **EUMCR15** on [aptouring.co.nz](https://www.aptouring.co.nz)

Western Front Explorer

EUWC15 / Amsterdam Return



Explore medieval Ghent in Belgium

15 Days / 14-Night River Cruise

Ship APT Solara / Visit 14 places, three countries

Signature Experiences

- ★ Visit the Kröller-Müller Museum in Otterlo, opened privately for APT guests, and discover masterpieces by Claude Monet, Van Gogh and Pablo Picasso.
- ★ Savour a special lunch at the 17th-century Château Neercanne in Maastricht, enjoying vistas across the Jeker Valley.

Highlights and Inclusions

- ✓ All-inclusive sightseeing experiences in 14 destinations.
- ✓ Enriching Signature Experiences and Freedom of Choice inclusions.
- ✓ A total of 41 meals at your choice of dining locations.
- ✓ All-day complimentary premium onboard beverages.
- ✓ Expert Cruise Director and local guides.
- ✓ In-suite dining and beverage service in all suites.
- ✓ Complimentary onboard Wi-Fi.
- ✓ Transfers, port charges, portage and gratuities.



The iconic windmills of Kinderdijk in the Netherlands



Itinerary

Day 01: Arrive Amsterdam, Embark Ship Welcome to Amsterdam. We'll meet you on arrival and transfer you to your ship. Savour fresh oysters with regional sparkling wine. After dinner, explore the city at your leisure. **D**

14 Nights: APT Solara.

Day 02: Amsterdam Start your day with a Freedom of Choice sightseeing activity. Perhaps admire Amsterdam's canals from a glass-top boat, or visit a local cheese store for a tasting of regional cheeses. Afterwards, enjoy a free afternoon. **BLD**

Day 03: Arnhem Dock in Arnhem and set out on your preferred sightseeing activity. History buffs will enjoy a visit to the Airborne Museum. Or discover Arnhem on a guided tour and see the Sabelspoort (medieval city gate), Mandela bridge and Eusebius Church. Alternatively, stay on board and partake in a fun Dutch language lesson. **BLD**

Day 04: Nijmegen, Otterlo Dock in Nijmegen, the oldest city in the Netherlands. Travel to Otterlo and visit

the Kröller-Müller Museum, which has been opened privately for APT guests. Discover masterpieces by Claude Monet, Van Gogh and Pablo Picasso. **BLD**

Day 05: Maastricht Tour Maastricht, renowned for its history and architecture. Savour lunch at Château Neercanne. **BLD**

Day 06: Antwerp You may like to spend today visiting the Battlefields of Fromelles, or enjoy a day at leisure to relax and explore Antwerp. **BLD**

Day 07: Antwerp Join a culinary walk to sample Belgium's renowned waffles and chocolate, and discover first-hand why they are celebrated as some of the world's finest. **BLD**

Day 08: Ghent Embark on your chosen sightseeing activity today. Visit the Flanders Fields battlefields, including the Memorial Museum Passchendaele 1917, Tyne Cot Cemetery – the largest British Commonwealth war cemetery in the world – and the Polygon Wood battlefield. Alternatively, join a local guide for a tour of Ghent, stopping by a number of the city's key landmarks before a cruise on the canal. **BLD**

Day 09: Ghent, Bruges Enjoy a full day to soak up the wonders of Bruges' World Heritage-listed historic centre, including the Markt and 13th-century belfry. **BLD**

Day 10: Ghent, Somme Battlefields Embark on a deeply moving exploration of the Somme battlefields, including the 1st and 2nd Australian Division Memorials. Continue to the Sir John

Monash Centre, situated on the grounds of the Villers-Bretonneux Military Cemetery, for an immersive journey into the stories of Australian soldiers who served on the Western Front during World War I. **BLD**

Day 11: Veere, Delta Works Cruise into Zeeland, home to the Delta Works flood protection systems. **BLD**

Day 12: Kinderdijk Visit World Heritage-listed Kinderdijk, known for its iconic 18th-century windmills. **BLD**

Day 13: Rotterdam Embark on a guided exploration of The Hague or enjoy a walking tour of the city of Gouda, followed by a cheese tasting. Afterwards, perhaps explore Rotterdam on your own. **BLD**

Day 14: Amsterdam Visit the Keukenhof Gardens, encompassing more than 70 acres of gardens and parklands. Relish the chance to admire the spectacular display of bulb flowers in bloom, including colourful tulips. **BLD**

Day 15: Disembark Ship, Depart Amsterdam Bid farewell to your fellow travellers, disembark your ship and be transferred to the airport. **B**

For more information about Freedom of Choice sightseeing options, visit aptouring.co.nz

Trip from \$8,995 per person, twin share

SAVE UP TO \$7,400 PER COUPLE*

2027 Dates and Prices (NZ\$) Per person, twin share	Cabin Category	Early Booking Price From*	Standard Price From
15 Days Amsterdam Return (EUWC15)			
Apr. 7	Twin Window	\$8,995	\$12,695
	French Balcony	\$13,195	\$16,895
	Owner's Suite	\$17,095	\$20,795

*Early Booking Pricing includes Earlybird Savings and/or Early Payment Discount. For full terms and conditions, visit aptouring.co.nz and search trip code.

Solo travellers add on from \$8,495, please enquire for details.

Please note: Prices are seasonal and are subject to change. Prices are based on Cat. E Twin Window Suite, Cat. A French Balcony Suite and Cat. Owner's Suite. See terms and conditions towards the back of the brochure.

For a detailed day-by-day itinerary, up-to-date prices, savings and departure dates, search **EUWC15** on aptouring.co.nz

Find out more at
aptouring.co.nz



The border between Romania and Serbia

Voyage Through the Balkans

EUVC15 / Budapest Return

15 Days / 14-Night River Cruise

Ship APT Ostara / **Visit** 14 places, five countries

Signature Experiences

- ★ Enjoy a fascinating walking tour of Golubac and explore the striking Golubac Fortress, then visit a local riverside tavern for a delicious Serbian meze tasting.
- ★ Uncover all things Hungarian in Kalocsa with a visit to Folk Art House and a paprika producer, then travel to a farm in Puszta for a stellar horse show and authentic lunch.



Golubac Fortress in Serbia

Iron Gates Cruising

Be mesmerised as your ship cruises through the Iron Gates, a stunning natural wonder of lush forests and towering cliffs. Set on the Danube River, this spectacular series of gorges connects Serbia and Romania.

Highlights and Inclusions

- ✓ All-inclusive sightseeing experiences in 12 destinations.
- ✓ Enriching Signature Experiences and Freedom of Choice inclusions.
- ✓ A total of 41 meals at your choice of dining locations.
- ✓ All-day complimentary premium onboard beverages.
- ✓ Expert Cruise Director and local guides.
- ✓ In-suite dining and beverage service in all suites.
- ✓ Complimentary onboard Wi-Fi.
- ✓ Transfers, port charges, portage and gratuities.



Itinerary

Day 01: Arrive Budapest, Embark Ship

Welcome to Budapest. We'll meet you on arrival and transfer you to your luxurious floating home for the next 15 days. Unpack, relax and get acquainted with your ship. **D**

14 Nights: APT Ostara.

Day 02: Budapest Enjoy a city tour, a culinary tour of the Great Market Hall, or board a funicular to Castle Hill before walking to Fisherman's Bastion. **BLD**

Day 03: Mohács Choose from a guided walking discovery of Pécs, a winery tour in Villány, or a guided bike ride along the Danube to an ancient mill. **BLD**

Day 04: Vukovar Bearing battle scars from the Croatian War of Independence, Vukovar offers a rich history to discover. On an enlightening city tour, hear about the city's wartime past and visit the Memorial Centre of Homeland War Vukovar. **BLD**

BLD: Breakfast/Lunch/Dinner

Day 05: Belgrade In Serbia's capital, decide to embark on a guided exploration of Belgrade, a kayak tour to Great War Island and Lido Beach, or a food market tour and tasting. **BLD**

Day 06: Golubac, Iron Gates Cruising Set out on a fascinating walking tour of Golubac. Explore the striking Golubac Fortress, then visit a local riverside tavern for a Serbian meze tasting. Later, cruise through the Iron Gates and experience one of the most awe-inspiring natural wonders you will encounter on your journey. Your ship will ribbon its way through this spectacular series of gorges between Serbia and Romania. **BLD**

Day 07: Scenic Cruising Spend the day relaxing on board and enjoying the facilities of your luxurious ship. Perhaps indulge in a treatment at the onboard spa or sip a delicious cocktail on the Daystar Deck as you admire the serene landscapes unfolding before you. **BLD**

Day 08: Giurgiu, Bucharest With an entire day in Bucharest, take in the wide tree-lined boulevards and Belle Epoque buildings, then walk through the Old Town to the Royal Court, Stavropoleos Church and the Lipscani district. After lunch, choose to visit the Palace of the Parliament or the Village Museum. **BLD**

Day 09: Ruse, Veliko Târnovo Discover the medieval history of Veliko Târnovo with an expert local guide as you wander through the city's cobbled lanes and fortified walls. Its centrepiece is Tsarevets Fortress, a citadel of the Second Bulgarian Empire. **BLD**

Day 10: Vidin, Belogradchik Explore the Baba Vida Fortress in Vidin. Afterwards, venture to Belogradchik and visit its ancient fortress on the northern slopes of the Balkan Mountains. You'll also see the town's unique rock formations. **BLD**

Day 11: Scenic Cruising The day is yours to relax on board, sleep in and take it easy, or awake early and take in stunning views from the Daystar Deck. **BLD**

Day 12: Novi Sad Choose to embark on a guided tour of Novi Sad or visit a local farmstead. **BLD**

Day 13: Kalocsa, Puszta Explore the Folk Art House, where local handicrafts are on show, then visit a producer of one of Hungary's spiciest exports, paprika. Afterwards, a farm in Puszta is the perfect setting for a stellar horse show and authentic Hungarian lunch. **BLD**

Day 14: Budapest Embark on a tour of the Hospital in the Rock or take a guided hike up Gellért Hill. Tonight, enjoy a farewell to remember with Hungarian folk music, local brandy, and artisan meats and cheeses. **BLD**

Day 15: Disembark Ship, Depart Budapest Transfer to the airport for your onward flight. **B**

For more information about Freedom of Choice sightseeing options, visit aptouring.co.nz

Trip from \$8,395 per person, twin share

SAVE UP TO \$7,400 PER COUPLE*			
2027 Dates and Prices (NZ\$) Per person, twin share	Cabin Category	Early Booking Price From*	Standard Price From
15 Days Budapest Return (EUVC15)			
Apr. 7	Twin Window	\$8,395	\$12,095
	French Balcony	\$12,595	\$16,295
	Owner's Suite	\$16,495	\$20,195

*Early Booking Pricing includes Earlybird Savings and/or Early Payment Discount. For full terms and conditions, visit aptouring.co.nz and search trip code.
Solo travellers add on from \$7,195, please enquire for details.
Please note: Prices are seasonal and are subject to change. Prices are based on Cat. E Twin Window Suite, Cat. A French Balcony Suite and Cat. Owner's Suite. See terms and conditions towards the back of the brochure.

For a detailed day-by-day itinerary, up-to-date prices, savings and departure dates, search **EUVC15** on aptouring.co.nz

Find out more at
aptouring.co.nz

Douro River Cruising

A Douro River cruise brings you face to face with verdant valleys, punctuated by quaint villages. Stop to explore Portugal's castles and quintas, and sip wine produced on ancient vineyards. Complement your journey with a discovery of the soul-stirring Iberian Peninsula on land.

Sail through the rolling hills of the Douro Valley in Portugal

MS Estrela

Discover Portugal's best-kept secrets as you glide along the tranquil Douro River aboard the MS Estrela. Purpose-built to capture the essence of the Southern European lifestyle, the MS Estrela promises an unforgettable journey through Portugal's enchanting wine country.



Take a dip in the onboard pool

Life on Board

Cruise in style aboard the MS Estrela and discover the beauty of Portugal's picturesque Douro River, where lush hills and ancient terraced vineyards cascade in every direction. This world-class vessel offers an intimate cruising experience, with just 116 passengers and 58 lavish staterooms and suites.

The Sun Deck

Embrace the Southern European way of life with ample outdoor space on board. On the Sun Deck, you can enjoy a refreshing dip in the large onboard pool, test your skills on the golf putting green, or simply sit back and relax with a drink in hand at the outdoor bar.

Luxurious Staterooms and Suites

Each stateroom and suite features an en suite bathroom, personal climate control, flat screen TV and complimentary Wi-Fi. French Balcony Suites also boast electric slide-down windows that open to a French balcony, allowing you to relish the glorious landscapes. A laundry and pressing service is also available, which is complimentary in some suite categories.

Onboard Entertainment

There's never a dull moment with our extensive range of onboard entertainment. A fascinating Portuguese folk music show, a riveting history lesson, and evenings overflowing with wine, song and dance are just some of the delights we have lined up for you.

Exquisite Dining Experiences

From buffet breakfasts to à la carte lunches and dinners, meals on board embrace the extraordinary produce and traditions of the Iberian Peninsula. You'll also have the freedom to savour a light lunch in the lounge or relish alfresco dining. In many suites, you can enjoy a continental breakfast and a cooked-to-order dinner. Indulge in a wide range of premium beverages on board, including beer, wine, cocktails, spirits, soft drinks, juices and tea and coffee.

Dedicated Staff

We take care of everything. Our expert Cruise and Tour Directors – renowned as the best in Europe – are always on hand with insights and recommendations, ensuring you enjoy a holiday experience you simply could not have on your own.



The stylish Main Lounge & Bar



Enjoy a drink with new-found friends



Relax in your Owner's Suite

Douro Delights with Lisbon and Madrid

EUPDCLM14 / Lisbon to Madrid



The picturesque Douro Valley in Portugal

Discover the Iberian Peninsula on land and cruise along the tranquil Douro River

14 Days / Six-Night Land Tour + Seven-Night River Cruise

Ship MS Estrela / **Visit** 14 places, two countries

Signature Experiences

- ★ Visit Porto's Palácio da Bolsa for a cocktail reception, followed by a fado performance in the Arabian Hall.
- ★ Savour a traditional lunch and tasting at Quinta da Pacheca with sensational views over the Douro River and Régua.

Highlights and Inclusions

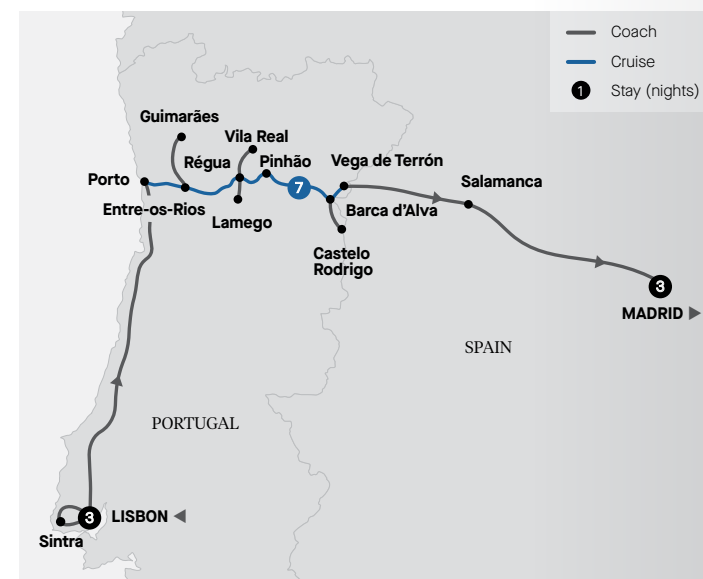
- ✓ All-inclusive sightseeing experiences in 10 destinations.
- ✓ Enriching Signature Experiences and Freedom of Choice inclusions.
- ✓ A total of 28 meals and all-day complimentary premium onboard beverages.
- ✓ Expert Tour and Cruise Directors, plus local guides.
- ✓ Room service and laundry (select suites).
- ✓ Complimentary onboard Wi-Fi.
- ✓ Transfers, port charges, portage and gratuities.



Palácio da Bolsa in Porto, Portugal

Cruise-Only Option

The option to begin in Porto and end your journey in Madrid is also available. Search EUPDC09 on aptouring.co.nz



Itinerary

Day 01: Arrive Lisbon Welcome to Portugal. On arrival, you'll be met and transferred to your hotel. This evening, a welcome reception awaits.

Three Nights: Lisbon, Hotel Tivoli Avenida Liberdade Lisboa.

Day 02: Lisbon Set off to see the sights of Lisbon by visiting the Old Town. See the World Heritage-listed Jerónimos Monastery, a symbol of Portugal's power and wealth during the Age of Discovery. Tonight, enjoy a welcome dinner. **BD**

Day 03: Lisbon, Sintra Explore the beautiful Serra de Sintra today. Mountains roll from every direction and every peak is as memorable as the last. Visit King Ferdinand II's ingenious Park and National Palace of Pena before having free time to explore Sintra. Return to Lisbon via the coastal route. You might like to try a local restaurant for dinner. **B**

Day 04: Lisbon, Coimbra, Porto, Embark Ship Travel through Portugal's countryside, then discover the medieval city of Coimbra. After sightseeing and free time for lunch, make your way to Porto. Cruise only guests transfer to Porto upon arrival (EUPDC09). Board your river

ship and settle in with a welcome dinner. As you embark on an illuminations cruise around Porto, your ship has the best vantage point to take in the city's iconic sights. **BD**

Seven Nights: MS Estrela.

Day 05: Porto Explore Porto's 16th-century Old Town and take a cable car ride before sampling selections of port. Alternatively, visit a traditional restaurant for a cooking demonstration or set off on an active walking tour. Tonight, head to the Palácio da Bolsa for a guided tour, followed by a cocktail reception and traditional fado performance in the Arabian Hall. **BLD**

Day 06: Porto, Entre-os-Rios This morning, cruise through the Douro Valley on your way to Entre-os-Rios. Explore Guimarães or visit Quinta da Aveleda for a tour and wine tasting. **BLD**

Day 07: Régua Enjoy a relaxing morning cruising to Régua. Visit the Douro Museum before savouring a traditional lunch and tasting at Quinta da Pacheca, overlooking the breathtaking Douro River and Régua. **BLD**

Day 08: Régua, Pinhão Set out on a guided tour of Lamego and sample a local specialty, Bola de Lamego. Alternatively, visit the 18th-century Palácio de Mateus. Later, relax as you cruise to Pinhão. **BLD**

Day 09: Pinhão Visit the Pinhão Railway Station, known as one of the most beautiful stations in Portugal. Venture

to a local quinta, then enjoy a captain's farewell dinner in the evening. **BLD**

Day 10: Barca d'Alva, Vega de Terron Tour Figueira de Castelo Rodrigo and visit the castle ruins. Return to the ship and savour dinner on board. **BLD**

Day 11: Vega de Terron, Disembark Ship, Salamanca, Madrid Disembark your ship today. Travel to the ancient Spanish city of Salamanca for a tour before continuing to your hotel in Madrid. **B**

Three Nights: Madrid, VP Plaza España Design or similar.

Day 12: Madrid Cruise only guests depart with a transfer to the airport (EUPDC09). Tour Spain's vibrant capital today, including visits to the Royal Palace and Plaza Mayor. This evening, savour a farewell dinner. **BD**

Day 13: Madrid Choose to embark on a culinary tour or explore the Museo del Prado. If you're more of a sports fan, you can visit the Santiago Bernabéu Stadium, home to the Real Madrid Football Club. **B**

Day 14: Depart Madrid Farewell Spain today and be transferred to the airport. **B**

For more information about Freedom of Choice sightseeing options, visit aptouring.co.nz

Trip from **\$13,695** per person, twin share

SAVE UP TO \$2,200 PER COUPLE*

2027 Dates and Prices (NZ\$) Per person, twin share	Cabin Category	Early Booking Price From*	Standard Price From
14 Days Lisbon to Madrid (EUPDCLM14)			
Apr. 12, 19; May 10, 17	Window	\$13,695	\$14,795
Jun. 7, 14; Jul. 5, 12	French Balcony	\$15,290	\$16,390
Aug. 23, 30; Sep. 20, 27	Owner's Suite	\$17,490	\$18,590
9 Days Cruise-Only Porto to Madrid (EUPDC09)			
Apr. 15, 21; May 13, 19	Window	\$8,395	\$9,495
Jun. 10, 16; Jul. 8, 14	French Balcony	\$9,990	\$11,090
Aug. 26; Sep. 1, 23, 29	Owner's Suite	\$12,190	\$13,290

*Early Booking Pricing includes Earlybird Savings and/or Early Payment Discount. For full terms and conditions, visit aptouring.co.nz and search trip code.

Solo travellers add on from \$10,595, please enquire for details.

Please note: Bold dates indicate itinerary operates in reverse (EUPDCRML14/EUPDCR09). Prices listed are indicative and may not be available on all departure dates listed. Prices are seasonal and are subject to change. Prices are based on Cat. E Window Suite, Cat. B French Balcony Suite and Cat. Owner's Suite. See terms and conditions towards the back of the brochure.

For a detailed day-by-day itinerary, up-to-date prices, savings and departure dates, search **EUPDCLM14** on aptouring.co.nz

Reverse Journey

This journey is also available in reverse. Begin your holiday in Madrid and finish in Lisbon. Search **EUPDCRML14** on

aptouring.co.nz

BLD: Breakfast/Lunch/Dinner



Explore Seville's Plaza de España in Spain

Spain and Portugal Delights with Douro River Cruise

EUPDCSP24 / Barcelona to Madrid

24 Days / 16-Night Land Tour + Seven-Night River Cruise

Ship MS Estrela / Visit 22 places, two countries

Signature Experiences

- ★ Enjoy a before-hours visit to Casa Vicens in Barcelona, the first house designed by Antoni Gaudí.
- ★ Feel the passion of a flamenco show as you graze on tasty tapas in Granada.
- ★ Visit Porto's Palácio da Bolsa for a cocktail reception, followed by a fado performance in the Arabian Hall.
- ★ Savour a traditional lunch and tasting at Quinta da Pacheca with sensational views over the Douro River and Régua.



Flamenco dancer, Seville, Spain

Land-Only Option

The option to begin in Barcelona and end your journey in Lisbon is also available. Search EULSP16 on aptouring.co.nz

Highlights and Inclusions

- ✓ All-inclusive sightseeing experiences in 18 destinations.
- ✓ Enriching Signature Experiences and Freedom of Choice inclusions.
- ✓ A total of 44 meals and all-day complimentary premium onboard beverages.
- ✓ Expert Tour and Cruise Directors, plus local guides.
- ✓ Room service and laundry (select suites).
- ✓ Complimentary onboard Wi-Fi.
- ✓ Transfers, port charges, portage and gratuities.



Itinerary

Day 01: Arrive Barcelona Be met on arrival and transferred to your hotel. Get to know your fellow travellers at a welcome reception.

Two Nights: Le Méridien Barcelona.

Day 02: Barcelona Enjoy a before-hours visit to Casa Vicens, the first house designed by Antoni Gaudí. See the exterior of the towering Sagrada Família on a city tour. Tonight, a welcome dinner awaits. **BD**

Day 03: Barcelona, Madrid Travel by train to Madrid. Upon arrival, visit the renowned Museo del Prado. **BD**

Two Nights: Madrid, VP Plaza España Design or similar.

Day 04: Madrid Set out on a guided discovery of Madrid, visiting the Royal Palace, Buen Retiro Park and Plaza Mayor. Tonight is free for you to explore. **B**

Day 05: Madrid, Toledo, Córdoba This morning, head to Toledo for a guided tour. Afterwards, continue to Córdoba. **BD**

Two Nights: Córdoba, Hotel Hospes Palacio del Bailío.

Day 06: Córdoba Visit the Mosque–Cathedral of Córdoba and the historic Jewish Quarter on a guided tour this morning. Later, enjoy time at leisure. **B**

Day 07: Córdoba, Granada At an olive estate, sample some of Spain's finest produce, then continue to Granada. Tonight, watch a flamenco show as you graze on tapas in a local gypsy cave. **BD**

Two Nights: Granada, Palacio de Santa Paula, Autograph Collection or similar.

Day 08: Granada Explore the enchanting Alhambra on a guided tour. **B**

Day 09: Granada, Ronda, Seville Travel to Ronda and join a guided exploration of this mountaintop town, set above a deep gorge. Then, continue to Seville. **BD**
Two Nights: Seville, Hotel Colón Gran Meliá or similar.

Day 10: Seville Visit the Royal Alcázar of Seville, Seville Cathedral and La Giralda tower. **B**

Day 11: Seville, Algarve Enter Portugal and head to the beautiful sun-drenched Algarve coast. **BD**

Two Nights: Algarve, Pine Cliffs Hotel, a Luxury Collection Resort.

Day 12: Algarve Discover Ria Formosa National Park on a local boat trip. **BD**

Day 13: Algarve, Lisbon Journey to Lisbon and enjoy time at leisure. **B**
Three Nights: Sofitel Lisbon Liberdade or similar.

Day 14: Lisbon Discover Lisbon's sights and explore the Old Town. Tonight, join your fellow travellers to share a special dinner. **BD**

Day 15: Lisbon, Sintra Travel to spellbinding Sintra. Visit King Ferdinand II's ingenious Park and National Palace of Pena before free time to explore. **B**

Day 16: Lisbon, Coimbra, Porto, Embark Ship Discover the medieval city of Coimbra. Later, make your way to Porto. Board your river ship, settle in with a special dinner and embark on an illuminations cruise around Porto. **BD**
Seven Nights: MS Estrela.

Days 17-22: Douro River Cruise
See days 05-10 on page 35 for details on your Douro River cruise.

Day 23: Vega de Terron, Disembark Ship, Salamanca, Madrid Disembark your ship and travel to the ancient city of Salamanca for a tour. Continue to Madrid. Enjoy an evening at leisure. **B**
Stay: Madrid, VP Plaza España Design or similar.

Day 24: Depart Madrid Following breakfast, be transferred to the airport. **B**

For more information about Freedom of Choice sightseeing options, visit aptouring.co.nz

Trip from \$23,295 per person, twin share

SAVE UP TO \$2,600 PER COUPLE*			
2027 Dates and Prices (NZ\$) Per person, twin share	Cabin Category	Early Booking Price From*	Standard Price From
24 Days Barcelona to Madrid (EUPDCSP24)			
Mar. 31; Apr. 21; May 26 Jun. 16, 23	Twin Window	\$23,295	\$24,595
	French Balcony	\$24,890	\$26,190
	Owner's Suite	\$27,090	\$28,390
Apr. 28; May 19 Sep. 1, 8, 29	Twin Window	\$24,195	\$25,495
	French Balcony	\$25,790	\$27,090
	Owner's Suite	\$27,990	\$29,290
16 Days Land-Only Barcelona to Lisbon (EULSP16)			
Mar. 31; Apr. 28, 29; May 26, 27 Jun. 23, 24; Sep. 8, 9; Oct. 7		\$15,395	\$15,995

*Early Booking Pricing includes Earlybird Savings and/or Early Payment Discount. For full terms and conditions, visit aptouring.co.nz and search trip code.

Solo travellers add on from \$16,295, please enquire for details.

Please note: Bold dates indicate itinerary operates in reverse (EUPDCRSP24/EULSPR16). Prices listed are indicative and may not be available on all departure dates listed. Prices are seasonal and are subject to change. Prices are based on Cat. E Window Suite, Cat. B French Balcony Suite and Cat. Owner's Suite. See terms and conditions towards the back of the brochure.

For a detailed day-by-day itinerary, up-to-date prices, savings and departure dates, search **EUPDCSP24** on aptouring.co.nz

Reverse Journey

This journey is also available in reverse. Begin your holiday in Madrid and finish in Barcelona. Search **EUPDCRSP24** on

aptouring.co.nz

BLD: Breakfast/Lunch/Dinner

Small Ship Expedition Cruising

From the storybook villages of the Norwegian fjords to Copenhagen's colourful canals, experience luxury without limits aboard the Seabourn Venture. Glide deep into dramatic fjords and along rugged coastlines, enjoying Seabourn's unrivalled service with a personal touch, reaching striking landscapes with ease aboard Zodiacs.

Seabourn Venture

The ultra-luxurious Seabourn Venture is ready to whisk you away to landscapes unlike any other. Purpose-built to travel to the world's most coveted and remote destinations, this opulent expedition ship delivers world-class dining and all-veranda, all ocean-front suites.

Set sail aboard Seabourn Venture

World-Class Dining Venues

Seabourn Venture boasts eight exceptional dining experiences with diverse options for all guests, from made-to-order sushi and lavish buffets to gourmet meals at The Restaurant and 24-hour in-suite dining. Complimentary premium spirits and fine wines are available at all times.

All-Veranda Suites

This all-veranda ship features just 132 suites, starting from 33 square metres. All suites include a comfortable living area, queen-size bed or two twin beds, walk-in closet, complimentary in-suite bar stocked with your preferences, and a spacious en suite with a bath and shower.

Shore Excursions

In Norway, a dedicated 23-person Expedition Team will guide you throughout your entire journey. Onboard Zodiacs will take you to discover the spectacular sights of this spellbinding region up close. The ship's two custom-built submarines offer unforgettable views of the hidden world beneath the ocean's surface.

Spacious Lounges and Recreational Areas

The vessel's plentiful public spaces allow you to cruise at your own pace. Elegantly furnished public areas include the Constellation Lounge, the Discovery Centre and The Club. Rejuvenate in an array of wellness spaces on board, including the spa, sauna, pool and fitness centre.



The elegantly furnished Expedition Lounge



Unwind in your spacious Penthouse Suite



Savour world-class dining The Restaurant



Discover the fjord town of Balestrand in Norway

Experience the epitome of indulgence on a cruise aboard the Seabourn Venture

11 Days / 10-Night Small Ship Expedition Cruise

Ship Seabourn Venture / **Visit** Nine places, three countries

Signature Experience

- ★ Ride the world-famous Flåm Railway from the fjordside village of Flåm to the mountain station at Myrdal, passing through through tunnels, sheer cliffs and alpine valleys, with a stop at the thunderous Kjosfossen Waterfall.

Highlights and Inclusions

- ✓ All-inclusive sightseeing experiences in eight destinations.
- ✓ Enriching Signature Experiences.
- ✓ A total of 29 meals at your choice of dining locations.
- ✓ All-day complimentary premium onboard beverages.
- ✓ Expert Cruise Director and 23-member Expedition Team.
- ✓ In-suite dining and beverage service in all suites.
- ✓ Complimentary onboard Wi-Fi.
- ✓ Transfers, port charges, portage and gratuities.



Ride the iconic Flåm Railway in Norway



Itinerary

Day 01: Arrive Amsterdam, Embark Ship Welcome to Amsterdam. We'll meet you on arrival in Amsterdam and transfer you to the ultra-luxurious Seabourn Venture. Unpack, relax and get acquainted with your ship. **D**

10 Nights: Seabourn Venture.

Day 02: Day at Sea Spend the full day at sea and enjoy an array of onboard activities and world-class dining options. Perhaps relax in the spa, listen to an informative lecture at the Discovery Centre or take in the expansive views from the Constellation Lounge. **BLD**

Day 03: Stavanger Arrive in Stavanger today, Norway's oil capital, where white-sand beaches meet dramatic fjords and soaring mountains. Embark on a guided hike to the legendary Preikestolen (Pulpit Rock), a sheer cliff towering 604 metres above the Lysefjord. Its flat plateau offers one of the world's most spectacular vantage points, with sweeping views of the fjord below and rugged mountain ridges on the horizon. **BLD**

Day 04: Balestrand, Flåm This morning, arrive in the idyllic fjord town of Balestrand. Perhaps take a stroll along the harbour, admiring the colourful wooden villas and striking views across the Sognefjord. You might experience a slice of history at Kviknes Hotel, whose Swiss-chalet style wooden building, completed in 1913, was once the largest of its kind in Norway. In the afternoon head to Flåm for an overnight stay. **BLD**

Day 05: Flåm There's plenty to enjoy in Flåm today. Ride the world-famous Flåm Railway, one of the most scenic train journeys in the world. Over the 20km route from the fjordside village of Flåm to the mountain station at Myrdal, you'll pass through tunnels, sheer cliffs and alpine valleys, with a stop at the thunderous Kjosfossen Waterfall. Every turn reveals sweeping views of Norway's dramatic peaks and cascading streams, an unforgettable showcase of the fjords. Then, perhaps set out on a hike or unwind in the FjordSauna, a floating retreat surrounded by some of the world's most spectacular scenery. **BLD**

Day 06: Rosendal Travel to Rosendal, a village in the Hardangerfjord region. Visit Baroniet Rosendal, built between 1661 and 1665 and the smallest castle in Scandinavia, or stroll along Skålagato, the village's charming main street with boutique shops and cafes. **BLD**

Day 07: Kristiansand Explore Kristiansand today, an urbanised, coastal city where palm trees line sandy beaches. Enjoy a guided town tour, including a visit to the scenic Ravnedalen Park, a lush valley beneath Ravneheia with a serene lake and walking paths. The park was created between 1874-1878, transforming the

former marshland into lush lawns and walking paths. **BLD**

Day 08: Oslo Welcome to Oslo, Norway's capital and a must-visit destination for art lovers. Explore the National Museum, the largest in the Nordic region, or the Munch Museum, home to *The Scream* and other iconic works. Beyond the galleries, discover vibrant waterfront districts and leafy parks, with the Oslofjord and surrounding forests lending the city its distinctive blend of culture and nature. **BLD**

Day 09: Skagen Arrive in Skagen, the northernmost town in Denmark. Discover the stunning coastal scenery that has long inspired artists, with picturesque beaches, breathtaking dunes and dramatic cliffs. **BLD**

Day 10: Copenhagen Admire Copenhagen, Denmark's vibrant capital, where historic canals, colourful waterfront houses, and cobbled streets invite exploration. Wander through lively neighbourhoods, sample world-class cuisine, or soak up the atmosphere in Tivoli Gardens, where beautifully landscaped gardens and historic rides capture the city's playful spirit. Beyond the iconic sights, the city's charming squares, boutique-lined streets, and lively harbourfront bring Copenhagen's rich history and contemporary culture to life. **BLD**

Day 11: Disembark Ship, Depart Copenhagen This morning, you'll disembark your ship and transfer to the airport for your onward flight. **B**

Trip from \$19,495 per person, twin share

SAVE UP TO \$7,000 PER COUPLE*			
2027 Dates and Prices (NZ\$) Per person, twin share	Cabin Category	Early Booking Price From*	Standard Price From
11 Days Amsterdam to Copenhagen (EUSSCAC11)			
May 18	Veranda Suite	\$19,495	\$22,995
	Penthouse Suite	\$23,995	\$27,495
	Owner's Suite	\$33,595	\$37,095

*Early Booking Pricing includes Earlybird Savings and/or Early Payment Discount. For full terms and conditions, visit aptouring.co.nz and search trip code.

Solo travellers add on from \$10,650, please enquire for details.

Please note: Prices are seasonal and are subject to change. Prices based on Cat. V1 Veranda Suite, Penthouse Suite and Owner's Suite. See terms and conditions towards the back of the brochure.

For a detailed day-by-day itinerary, up-to-date prices, savings and departure dates, search **EUSSCAC11** on aptouring.co.nz

Find out more at
aptouring.co.nz

BLD: Breakfast/Lunch/Dinner

Magnificent Europe and Norwegian Fjords

EUMCRSS24 / Budapest to Copenhagen



The charming village of Rosendal in Norway

24 Days / 13-Night River Cruise + 10-Night Small Ship Expedition Cruise

Ships APT Solara and Seabourn Venture / **Visit** 25 places, seven countries

Signature Experiences

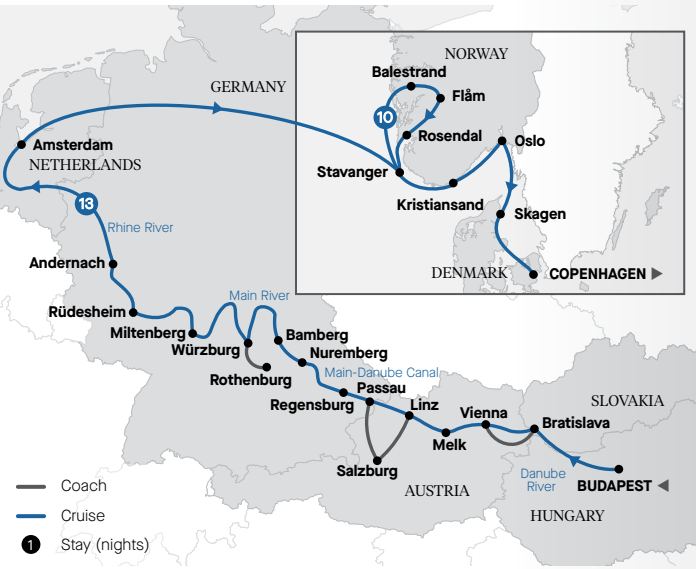
- ★ Visit Vienna's City Palace for a cocktail party and private performance of classics by Mozart and Strauss.
- ★ Exclusive – Enjoy lunch and a spectacular show featuring songs from *The Sound of Music* at a traditional restaurant on the Gaisberg mountain, overlooking Salzburg.
- ★ Exclusive – In Andernach, go beyond the gates at Narned Castle, where you'll enjoy a morning tea and piano recital.
- ★ Ride the world-famous Flåm Railway from the fjordside village of Flåm to the mountain station at Myrdal.

Highlights and Inclusions

- ✓ All-inclusive sightseeing experiences in 22 destinations.
- ✓ Enriching Signature Experiences and Freedom of Choice inclusions.
- ✓ A total of 68 meals at your choice of dining locations.
- ✓ All-day complimentary premium onboard beverages.
- ✓ Expert Cruise and Tour Directors, plus Expedition Team.
- ✓ In-suite dining and beverage service in all suites.
- ✓ Complimentary onboard Wi-Fi.
- ✓ Transfers, port charges, portage and gratuities.



Tivoli Gardens in Copenhagen, Denmark



Itinerary

Day 01: Arrive Budapest, Embark Ship Arrive in Budapest and be transferred to your luxurious floating home. Unpack, relax and get acquainted with your ship. **D**
13 Nights: APT Solara.

Day 02: Budapest Enjoy a city tour, a culinary tour of the Great Market Hall, or board a funicular to Castle Hill before walking to Fisherman's Bastion. **BLD**

Day 03: Vienna On arrival in Vienna, take in the city's many landmarks. **BLD**

Day 04: Vienna Choose to visit Schönbrunn Palace, embark on a culinary tour of Vienna's narrow streets, or travel to Bratislava in Slovakia. After dinner, head to Vienna's City Palace for an exclusive cocktail party and private recital. **BLD**

Day 05: Dürnstein, Melk Explore the beautiful town of Dürnstein. Then, choose to cruise or travel on a guided bike ride through the Wachau Valley to Melk. Later, visit Melk Abbey. **BLD**

Day 06: Passau, Salzburg, Linz Take a tour of Salzburg before a Gaisberg Mountain lunch and a *Sound of Music* show. **BLD**

BLD: Breakfast/Lunch/Dinner

Day 07: Regensburg Set out on a guided tour of Regensburg's city centre. Alternatively, take a guided bike ride to the Walhalla memorial. **BLD**

Day 08: Nuremberg Choose to tour Nuremberg's WWII sights or medieval architecture. While cruising, indulge in a Bavarian beer, sausage and pretzel tasting on the Daystar Deck. **BLD**

Day 09: Bamberg Explore Bamberg's World Heritage-listed Old Town with an expert local guide. **BLD**

Day 10: Würzburg Visit the Würzburg Residence or explore medieval Rothenburg. Alternatively, hike to the Marienberg Fortress or delight in a tour and tasting at a Franconian winery and whisky distillery. **BLD**

Day 11: Miltenberg Enjoy a guided walking tour and liqueur tasting, or visit a local monastery. **BLD**

Day 12: Rüdesheim Choose from a gondola ride, a visit to Siegfried's Mechanical Musical Instrument Museum, or a wine tasting. **BLD**

Day 13: Andernach On an exclusive visit to Narned Castle, go beyond the gates and wander about the rooms and grounds. **BLD**

Day 14: Amsterdam, Disembark APT Solara, Embark Seabourn Venture Arrive in Amsterdam where you will depart your river ship and be transferred to the Seabourn Venture. **BLD**
10 Nights: Seabourn Venture.

Day 15: Day at Sea Spend the day at sea and enjoy onboard activities. **BLD**

Day 16: Stavanger Arrive in Stavanger today, where white-sand beaches meet dramatic fjords and soaring mountains. Embark on a guided hike to the legendary Preikestolen (Pulpit Rock). **BLD**

Day 17: Balestrand, Flåm Discover the idyllic fjord town of Balestrand. You might take a stroll along the harbour or visit Kviknes Hotel. In the afternoon, head to Flåm for an overnight stay. **BLD**

Day 18: Flåm Enjoy a Signature Experience aboard the iconic Flåm Railway. Later, perhaps set out on a hike or unwind in the FjordSauna. **BLD**

Day 19: Rosendal Travel to Rosendal. Visit Baroniet Rosendal or stroll along Skålagato, the village's charming shopping street. **BLD**

Day 20: Kristiansand Explore Kristiansand, a coastal city where palm trees line sandy beaches. Enjoy a guided town tour, including a visit to the scenic Ravnedalen Park. **BLD**

Day 21: Oslo Welcome to Norway's capital and a must-visit destination for art lovers. Explore the National Museum or the Munch Museum. **BLD**

Day 22: Skagen Arrive in the northernmost town of Denmark. Discover picturesque beaches, breathtaking dunes and dramatic cliffs. **BLD**

Day 23: Copenhagen Discover Denmark's vibrant capital, where historic canals, colourful waterfront houses and cobbled streets invite exploration. **BLD**

Day 24: Disembark Ship, Depart Copenhagen This morning, you'll disembark your ship and transfer to the airport for your onward flight. **B**

For more information about Freedom of Choice sightseeing options, visit aptouring.co.nz

Trip from \$33,295 per person, twin share

SAVE UP TO \$7,400 PER COUPLE*			
2027 Dates and Prices (NZ\$) Per person, twin share	Cabin Category	Early Booking Price From*	Standard Price From
24 Days Budapest to Copenhagen (EUMCRSS24)			
May 5	Veranda Suite/Twin Window	\$33,295	\$36,995

*Early Booking Pricing includes Earlybird Savings and/or Early Payment Discount. For full terms and conditions, visit aptouring.co.nz and search trip code.
Solo travellers add on from \$17,300, please enquire for details.
Please note: Prices based on Cat. V1 Veranda Suite on board Seabourn Venture and Twin Window on board the APT Solara. See terms and conditions towards the back of the brochure.

For a detailed day-by-day itinerary, up-to-date prices, savings and departure dates, search **EUMCRSS24** on aptouring.co.nz

Find out more at
aptouring.co.nz

Croatia Yacht Cruising

Explore Croatia's mesmerising Adriatic coast aboard the custom-built MV Lady Eleganza. Discover a land of ancient towns, islands lined with medieval homes, and walled cities seemingly drawn from fairy tales. Stay overnight in port after the crowds have gone and uncover the real Croatia.



MV Lady Eleganza

Discover the jewels of Croatia aboard the MV Lady Eleganza. Wake each morning to a new port of call and spectacular coastal scenery. Leap into the dazzling Adriatic straight from the spacious swimming platform on the Main Deck. Relax on the Sun Deck and explore towns at night once larger ships have left.

An Intimate Cruising Experience

Purpose-built for navigating the island-studded Adriatic coast, the MV Lady Eleganza offers a once-in-a-lifetime luxury yacht experience. With just 36 guests on board, enjoy a seamless journey without queues when embarking or disembarking. Soak up an authentic and relaxed atmosphere, with the option to experience Croatia's glamorous harbours and towns in the evening once larger ships have departed.

Amenities on Board

Jump straight into the Adriatic Sea from the spacious swimming deck at the stern of the MV Lady Eleganza. The yacht also features a state-of-the-art infotainment system, an outdoor dining area and barbecue. Whether enjoying the air-conditioned lounge and bar or reclining on a sunbed, there is ample space to relax on board.

Onboard Dining and Beverages

From locally inspired meals and sumptuous breakfasts to alfresco lunches and more, savour a range of exceptional dining experiences. All meals are included, and a wide range of included beverages are served at your discretion.

Stylish Cabins

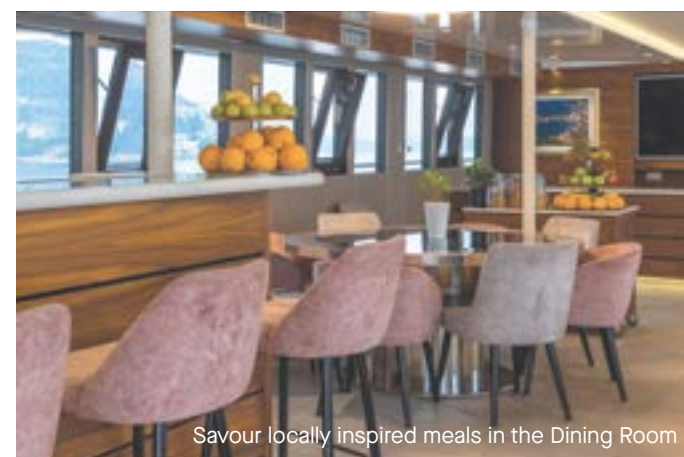
Experience effortless elegance and comfort aboard the MV Lady Eleganza with a selection of beautifully appointed cabins. Enjoy stylish interiors, modern amenities and an en suite bathroom in your own personal retreat.

Your Captain and Crew

The experienced captain and crew are a small, close-knit team with expert knowledge of the Adriatic coast, dedicated to ensuring your comfort and safety at all times.



Recline on the Sun Deck



Savour locally inspired meals in the Dining Room



The outdoor spa invites relaxation

Glide along the Adriatic aboard MV Lady Eleganza

Croatian Island Discovery

EUCCD09 / Dubrovnik to Zagreb



The dazzling island of Korčula in Croatia

Embark on an unforgettable luxury yacht experience along the Dalmatian coast

Nine Days / Eight-Night Yacht Cruise

Ship MV Lady Eleganza / Visit 13 places, one country

Signature Experience

★ In Radošić, sample local brandy and homemade doughnuts, explore a family estate, then enjoy a traditional dinner accompanied by a performance of songs passed down through generations since the 18th century.

Highlights and Inclusions

- ✓ All-inclusive sightseeing experiences in 10 destinations.
- ✓ Enriching Signature Experience.
- ✓ A total of 23 meals with complimentary onboard beverages served at your discretion.
- ✓ Expert Cruise Director and local guides.
- ✓ Complimentary onboard Wi-Fi.
- ✓ Transfers, port charges, portage and gratuities.



Krka National Park

Explore Croatia's stunning Krka National Park. The star attraction is Skradinski Buk, a vast natural pool with towering waterfalls at one end and countless cascades at the other, with the river flowing through a cluster of small islets.



Itinerary

Day 01: Arrive Dubrovnik, Embark Yacht

On arrival in Dubrovnik, be met at the airport and transferred to your yacht. This evening, your yacht will dock in Dubrovnik, where you'll enjoy a captain's welcome dinner on board. **D**
Eight Nights: MV Lady Eleganza.

Day 02: Dubrovnik, Korčula Embark on a guided discovery of Dubrovnik, known as the 'Pearl of the Adriatic'. Afterwards, set sail for the enchanting island of Korčula, perhaps stopping for a swim on the uninhabited island of Jakljan on the way (weather permitting). On arrival in Korčula, set out on a guided walking tour followed by dinner. Your yacht will dock here overnight. **BLD**

Day 03: Korčula, Vis Today, head to one of Croatia's most beautiful islands, Vis. The island was previously used as a military base for the Yugoslav army and only opened up to tourism in 1989. This long period of isolation and lack

of development has preserved the island's pristine beauty, which is its main drawcard. Enjoy a guided tour before time at leisure to explore. Your ship will dock in Vis overnight. **BLD**

Day 04: Vis, Hvar, Split Journey to vibrant Hvar, where you'll embark on a guided walking discovery of the island's stunning Old Town. Start in the iconic main square, the largest piazza in Dalmatia, then see the cathedral and Franciscan Monastery. You'll then continue on to Split. **BLD**

Day 05: Šibenik, Radošić Set sail for Šibenik this morning. On arrival, travel to the traditional village of Radošić to sample local brandy and homemade doughnuts. You'll then watch the locals perform a traditional song and enjoy a cooking demonstration before a tour of the village and dinner. **BLD**

Day 06: Šibenik, Krka National Park, Zadar Today, head to breathtaking Krka National Park. Here, explore the dramatic waterfalls, the most spectacular of which is Skradinski Buk, a large natural pool with high waterfalls at one end and countless cascades at the other. Take a walk along the wooden jetties and bridges to admire the falls, and the unique flora and fauna. Later, continue onwards to Zadar. **BLD**

Day 07: Zadar, Pag, Rab Enjoy a guided walk through Zadar's well-preserved Old Town, seeing its Roman ruins, Romanesque churches and Renaissance palaces. Continue to the rocky island of Pag, where you will have the chance to swim in the stunning Adriatic Sea straight

off the spacious rear deck of your yacht. Later, continue to Rab and dock here overnight, giving you the chance to explore this charming town after the daytime crowds have dispersed. **BLD**

Day 08: Rab, Krk, Opatija In Rab, spend some time meandering through the narrow alleys of the picturesque Old Town. Afterwards, sail to the magnificent island of Krk. Weather permitting, your yacht will drop anchor so you can swim right off the deck's swimming platform. Then, sail to Opatija in the early afternoon and embark on a guided tour. Tonight, a farewell dinner awaits. **BLD**

Day 09: Opatija, Disembark Yacht, Depart Zagreb After breakfast, say goodbye to the MV Lady Eleganza and crew before a transfer from Opatija to Zagreb Airport for your onward flight. **B**



Lose yourself in Dubrovnik, Croatia

Trip from **\$9,495** per person, twin share

SAVE UP TO \$2,200 PER COUPLE*			
2027 Dates and Prices (NZ\$) Per person, twin share	Cabin Category	Early Booking Price From*	Standard Price From
9 Days Dubrovnik to Zagreb (EUCCD09)			
May 23	Cat 1. Twin/Double	\$9,495	\$10,595
Jun. 8, 16, 24	Cat 2. Twin/Double	\$9,945	\$11,045
Jul. 2	Cat 3. Twin	\$10,345	\$11,445
Aug. 5, 13	Cat 4. Double	\$10,845	\$11,945
Sep. 16, 24	Cat 5. Double	\$11,295	\$12,395
Oct. 2			

*Early Booking Pricing includes Earlybird Savings and/or Early Payment Discount. For full terms and conditions, visit [aptouring.co.nz](https://www.aptouring.co.nz) and search trip code.
Solo travellers add on from \$4,850, please enquire for details.
Please note: Bold dates indicate itinerary operates in reverse (EUCCD09). Prices listed are indicative and may not be available on all departure dates listed. Prices are seasonal and are subject to change. See terms and conditions towards the back of the brochure.

For a detailed day-by-day itinerary, up-to-date prices, savings and departure dates, search **EUCCD09** on [aptouring.co.nz](https://www.aptouring.co.nz)

Reverse Journey

This journey is also available in reverse. Begin your holiday in Zagreb and finish in Dubrovnik. Search **EUCCD09** on

aptouring.co.nz

BLD: Breakfast/Lunch/Dinner

Croatia in Depth

EUCCDR14 / Dubrovnik to Zagreb



The Old Bridge in Mostar, Bosnia and Herzegovina

14 Days / 13-Night Yacht Cruise

Ship MV Lady Eleganza / Visit 17 places, three countries

Signature Experiences

- ★ On the enchanting island of Korčula, witness an exclusive Moreška performance, a traditional sword dance.
- ★ Indulge your senses with a wine tasting paired with local delicacies at the award-winning Stina Winery in Bol.
- ★ In Radošić, sample local brandy and homemade doughnuts, explore a family estate, then enjoy a traditional dinner accompanied by a performance of songs.



Stina Winery

Immerse yourself in the charm of Dalmatia with a tasting of regional varieties at Stina Winery on the island of Brač. The award-winning winery carries a legacy that dates back to the early 1900s, when the First Dalmatian Wine Cooperative was established in Bol.

Highlights and Inclusions

- ✓ All-inclusive sightseeing experiences in 13 destinations.
- ✓ Enriching Signature Experiences.
- ✓ A total of 38 meals with complimentary onboard beverages served at your discretion.
- ✓ Expert Cruise Director and local guides.
- ✓ Complimentary onboard Wi-Fi.
- ✓ Transfers, port charges, portage and gratuities.



Itinerary

Day 01: Arrive Dubrovnik, Embark Yacht Arrive in Dubrovnik and be transferred to your luxury cruising yacht. Enjoy a welcome dinner and dock overnight. **D**
13 Nights: MV Lady Eleganza.

Day 02: Dubronik, Cavtat Wander past the palaces, monasteries and churches of Dubrovnik's World Heritage-listed Old Town this morning. Later, weigh anchor and soak up the serene views as you sail towards Cavtat, a picturesque harbour town on the Adriatic coast. **BLD**

Day 03: Cavtat, Herceg Novi, Kotor Travel by coach to Herceg Novi in Montenegro. Here, board local boats and cruise into the striking Bay of Kotor. This picturesque natural harbour is framed by sheer cliffs that hug the walled town of Kotor. Embark on a walking tour of Kotor's Old Town before enjoying time at leisure. Later, return to your ship in Cavtat. **BLD**

Day 04: Cavtat, Šipan Set sail for the Elaphiti Islands. En route, stop for a swim from the yacht's stern platform (weather permitting). Upon arrival in Šipan, enjoy free time to explore before dinner. **BLD**

BLD: Breakfast/Lunch/Dinner

Day 05: Šipan, Korčula Savour postcard-perfect views as you stop for a swim near Mljet. Later, arrive at the charming island of Korčula, where you'll witness an exclusive Moreška performance. Your yacht will dock here overnight. **BLD**

Day 06: Korčula, Opuzen, Mostar Dock in Opuzen, which lies upstream on the Neretva River. After lunch, travel by coach over the border to Mostar in Bosnia and Herzegovina. See the World Heritage-listed Stari Most (Old Bridge) and learn about its history on a walking tour. Enjoy dinner in a local restaurant with traditional entertainment. **BLD**

Day 07: Bol, Makarska This morning, sail to the breathtaking island of Brač. Head to the coastal town of Bol and immerse yourself in the charm of Dalmatia with a visit to Stina Winery. Expert staff will guide you through a tasting of regional wines paired with local delicacies, including olives, artisanal cheeses and cured ham. **BLD**

Day 08: Makarska, Split Sail to Split this morning, then board small boats for an excursion along the emerald-green Cetina River. Head towards Radmanove Mlinice (Radman's Mills), a stone mill established in 1772 to grind cereal for the people of Omis. **BLD**

Day 09: Split, Šibenik, Radošić Take a guided tour of historic Split before travelling by coach to the village of Radošić. Here, you'll be welcomed with local brandy and doughnuts. Enjoy traditional entertainment before savouring a delectable dinner of regional

specialties. Later, rejoin your yacht, which will be docked in Šibenik. **BLD**

Day 10: Šibenik, Krka National Park, Zadar Today, visit Krka National Park. Spend the morning strolling along boardwalks to view the famous waterfalls of the Krka River. Afterwards, sail to Zadar, home to impressive Roman ruins. Your yacht will dock here overnight. **BLD**

Day 11: Zadar, Mali Lošinj Relax as your yacht sails to Lošinj island. Take a walking tour of the main town, Mali Lošinj, and admire its pastel-coloured villas. You'll also have the opportunity to experience local life and visit a buzzing cafe or tavern after dinner on board. **BLD**

Day 12: Mali Lošinj, Pula Your yacht charts a course for Pula, a treasure trove of Roman ruins. Later, visit the remarkably preserved Pula Arena. **BLD**

Day 13: Pula, Rovinj Continue to Rovinj. On arrival, join a walking tour, which takes you to the 18th-century Venetian-style church. **BLD**

Day 14: Disembark Yacht, Rovinj, Depart Zagreb After breakfast, it is time to bid farewell. Be transferred to Zagreb Airport for your onward flight. **B**

For more information about Freedom of Choice sightseeing options, visit aptouring.co.nz

Trip from \$13,695 per person, twin share

SAVE UP TO \$2,200 PER COUPLE*			
2027 Dates and Prices (NZ\$) Per person, twin share	Cabin Category	Early Booking Price From*	Standard Price From
14 Days Dubrovnik to Zagreb (EUCCDR14)			
Apr. 27	Cat 1. Twin/Double	\$13,695	\$14,795
May 10	Cat 2. Twin/Double	\$14,445	\$15,545
Jul. 10, 23	Cat 3. Twin	\$15,045	\$16,145
Aug. 21	Cat 4. Double	\$15,845	\$16,945
Sep. 3	Cat 5. Double	\$16,595	\$17,695

*Early Booking Pricing includes Earlybird Savings and/or Early Payment Discount. For full terms and conditions, visit aptouring.co.nz and search trip code.

Solo travellers add on from \$6,700, please enquire for details.

Please note: Bold dates indicate itinerary operates in reverse (EUCCDR14). Prices listed are indicative and may not be available on all departure dates listed. Prices are seasonal and are subject to change. See terms and conditions towards the back of the brochure.

For a detailed day-by-day itinerary, up-to-date prices, savings and departure dates, search **EUCCDR14** on aptouring.co.nz

Reverse Journey

This journey is also available in reverse. Begin your holiday in Zagreb and finish in Dubrovnik. Search **EUCCDR14** on

aptouring.co.nz



Adriatic Adventure

EUCCSD7 / Split to Dubrovnik

Watch the sun set over Hvar in Croatia

Seven Days / Six-Night Yacht Cruise

Ship MV Lady Eleganza / Visit Six places, one country

Signature Experiences

- ★ Savour a wine tasting at Stina Winery in Bol on the breathtaking island of Brač.
- ★ On the enchanting island of Korčula, witness an exclusive Moreška performance, a traditional sword dance.

Highlights and Inclusions

- ✓ All-inclusive sightseeing experiences in six destinations.
- ✓ Enriching Signature Experiences.
- ✓ A total of 17 meals with complimentary onboard beverages served at your discretion.
- ✓ Expert Cruise Director and local guides.
- ✓ Complimentary onboard Wi-Fi.
- ✓ Transfers, port charges, portage and gratuities.

Trip Overview

Day	Destination
01	Arrive Split, Embark Yacht
02	Split, Brač
03	Brač, Hvar
04	Hvar, Korčula
05	Korčula, Šipan
06	Šipan, Dubrovnik
07	Disembark Yacht, Depart Dubrovnik



Trip from **\$7,495** per person, twin share

SAVE UP TO \$2,200 PER COUPLE*			
2027 Dates and Prices (NZ\$) Per person, twin share	Cabin Category	Early Booking Price From*	Standard Price From
7 Days Split to Dubrovnik (EUCCSD7)			
Apr. 21 Oct. 18	Cat 1. Twin/Double	\$7,495	\$8,595
	Cat 2. Twin/Double	\$7,895	\$8,995
	Cat 3. Twin	\$8,145	\$9,245
	Cat 4. Double	\$8,595	\$9,695
	Cat 5. Double	\$8,945	\$10,045

*Early Booking Pricing includes Earlybird Savings and/or Early Payment Discount. For full terms and conditions, visit aptouring.co.nz and search trip code.

Solo travellers add on from \$3,900, please enquire for details.

Please note: Bold date indicates itinerary operates in reverse (EUCCDS7). Prices listed are indicative and may not be available on all departure dates listed. Prices are seasonal and are subject to change. See terms and conditions towards the back of the brochure.

For a detailed day-by-day itinerary, up-to-date prices, savings and departure dates, search **EUCCSD7** on aptouring.co.nz

Reverse Journey

This journey is also available in reverse. Begin your holiday in Dubrovnik and finish in Split. Search **EUCCDS7** on

aptouring.co.nz



Jewels of Slovenia with Croatian Island Discovery

EUCCLD16 / Ljubljana to Dubrovnik

Board a Pletna boat to Lake Bled in Slovenia

16 Days / Seven-Night Small Group Tour + Eight-Night Yacht Cruise

Ship MV Lady Eleganza / Visit 23 places, two countries

Signature Experience

- ★ In Radošić, sample local brandy and homemade doughnuts, then enjoy a dinner accompanied by a performance of songs.

Highlights and Inclusions

- ✓ All-inclusive sightseeing experiences in 19 destinations.
- ✓ Enriching Signature Experience.
- ✓ A total of 35 meals with complimentary onboard beverages served at your discretion.
- ✓ Expert Tour and Cruise Directors, plus local guides.
- ✓ Complimentary onboard Wi-Fi.
- ✓ Transfers, port charges, portage and gratuities.

Trip Overview

Day	Destination
01	Arrive Ljubljana – Slovenia
02	Ljubljana – Slovenia
03	Ljubljana, Logar Valley – Slovenia
04	Logar Valley – Slovenia
05	Logar Valley, Bohinj, Vogel, Bled – Slovenia
06	Bled, Portoroz – Slovenia
07	Portoroz – Slovenia
08	Portoroz, Piran – Slovenia, Opatija – Croatia, Embark Yacht
09	Opatija, Krk, Rab – Croatia
10	Pag, Zadar – Croatia
11	Šibenik, Radošić – Croatia
12	Šibenik, Krka National Park, Split – Croatia
13	Split, Hvar, Vis – Croatia
14	Vis, Korčula – Croatia
15	Korčula, Dubrovnik – Croatia
16	Disembark Yacht, Depart Dubrovnik – Croatia



Trip from **\$18,995** per person, twin share

SAVE UP TO \$2,600 PER COUPLE*			
2027 Dates and Prices (NZ\$) Per person, twin share	Cabin Category	Early Booking Price From*	Standard Price From
16 Days Ljubljana to Dubrovnik (EUCCLD16)			
Jun. 25 Aug. 6 Sep. 25	Cat 1. Twin/Double	\$18,995	\$20,295
	Cat 2. Twin/Double	\$19,445	\$20,745
	Cat 3. Twin	\$19,845	\$21,145
	Cat 4. Double	\$20,345	\$21,645
	Cat 5. Double	\$20,795	\$22,095

*Early Booking Pricing includes Earlybird Savings and/or Early Payment Discount. For full terms and conditions, visit aptouring.co.nz and search trip code.

Solo travellers add on from \$8,700, please enquire for details.

Please note: Prices listed are indicative and may not be available on all departure dates listed. Prices are seasonal and are subject to change. See terms and conditions towards the back of the brochure.

For a detailed day-by-day itinerary, up-to-date prices, savings and departure dates, search **EUCCLD16** on aptouring.co.nz

Find out more at
aptouring.co.nz

Terms and Conditions

The following terms and conditions ('booking conditions') form the basis of your contract with Australian Pacific Touring Pty Ltd ('APT', 'we' or 'our'). Please read them carefully as they set out your and our respective rights and obligations.

These Terms and Conditions were correct at time of publication. For the most up to date Terms and Conditions visit our website [aptouring.com/terms](https://www.aptouring.com/terms)

GENERAL CONDITIONS:

By asking us to confirm your booking, we are entitled to assume that you have had the opportunity to read and have read these booking conditions, that you agree to them and that you agree to them applying to your holiday arrangements that you book with us and which we agree to make, provide or perform (as applicable) as part of our contract with you. References in these booking conditions to your 'holiday package' are references to the tour package you have booked with APT. References to 'excursions' are references to short trips or tours included or available as part of your holiday package.

Governing Law

These booking conditions are governed by the law in force in Victoria, Australia.

BEFORE YOU BOOK

Price Validity

Published prices are valid at the time of publication but are subject to change. They may be varied by advertising or special offers, or changed after the publication date for any reason, including without limitation, to cover changes in government taxes and charges, exchange rate variations, fuel surcharges, airline charges, a force majeure event or other material increases by suppliers. The most up-to-date pricing may be found on our website – www.aptouring.co.nz. Prices will be confirmed at time of booking and honoured for up to seven days. All holidays are subject to availability at the time of booking.

Please see important information listed under Special Conditions for relevant deposit and final payment terms.

Transfers

Airport transfers are included on the first and last day of the holiday package at designated times. No refund will be given for unused transfers. Transfers cannot be re-routed to other pick-up points or destinations. Passengers who miss the pre-booked transfers must make their own way to/from the hotel at their own expense. A group transfer is generally a shared transfer and the type of vehicle used will normally be dependent upon the size of the group.

Freedom of Choice™ and Signature Experiences

Minimum and maximum group numbers apply on some Freedom of Choice or Signature Experience inclusions. If your first choice of Freedom of Choice is unavailable you may be asked to choose an alternative.

Public Holidays and Festivals

Most countries have public holidays, religious or otherwise. Festivities may temporarily disrupt your holiday and some religious holidays may result in a reduction of available facilities and entertainment.

Superdeals and Special Offers

Conditions apply. For full terms and conditions relating to any Superdeal or special offer on your booking, please refer to the individual trip page on our website www.aptouring.co.nz.

Other Special Offers

Special Deals and Special Offers other than those advertised herein may be promoted by APT after the program is released. These new special deals/offers do not apply to existing bookings unless otherwise stated.

APT Club

Details including the full range of benefits and conditions are available on our website at <https://www.aptouring.com/apt-club>.

BOOKING AND PAYING FOR YOUR HOLIDAY

Airfares

Air travel is arranged with independent airlines. APT will arrange air travel as advertised in connection with your holiday package or otherwise arranged with APT. All airfares are subject to flight and booking class availability. Airfares will be booked and ticketed upon receipt of your deposit to avoid price or tax increases. Airport taxes vary for each departure point and routing of airline. Airline schedules are subject to change without notice. Once air tickets are issued, airline amendment and/or cancellation fees apply and, in some cases, are non-refundable. Name changes and voluntary date and schedule changes will incur fees. APT is not liable for delays or disruptions of air travel. Once tickets are issued APT will have no other

liability and will not be responsible for refunding the cost of any services booked in conjunction with the flights.

Airline Loyalty Points Eligibility

APT uses the services of a range of airlines in its packages. APT does not warrant that its airfares attract loyalty points as airlines control the application of loyalty points in all cases. Requests to use loyalty points to upgrade travel need to be directed to the airline concerned by the member.

APT Deposit Cancellation Peace of Mind

Applicable when an upfront fee of \$95 per person is paid with your deposit. The holiday package can be cancelled prior to the final payment date and your deposit will be retained as an APT holding credit to be used for future bookings. If Deposit Cancellation Peace of Mind is claimed, monies held must be used on a future tour and cannot be redeemed against the original tour departure date. Deposits held in credit will exclude fees imposed by third parties, including but not limited to air travel, rail travel and hotels. When booking airfares through APT (including when taking advantage of a special offer that includes air travel), standard airline cancellation fees will apply. In some cases, airfares will be non-refundable. In the event of cancellation, these fees will be deducted from the deposit paid, and therefore the credit being held. APT Deposit Cancellation Peace of Mind applies to new bookings only and is only valid up until 100 days prior to travel. After three years, unused credit funds will incur the original cancellation conditions. This does not replace travel insurance, which you are recommended to purchase at the time of booking.

Travel Insurance

Travel insurance is not included in your holiday package. For your protection, we strongly recommend you purchase comprehensive travel insurance that includes (without limitation) coverage for the full cost of your holiday package, medical expenses, loss of luggage, land content and airfare charges that may occur due to cancellation, impossibility of performance or other frustration, disruption, loss of deposit or strikes.

Travel Information and Documents

After booking you will receive an invoice with all important information relevant to your holiday package. We strongly recommend you check the details carefully and read the included information. Please ensure that you check your flight timings carefully on your tickets, particularly early morning departures. Approximately 21 days before departure you will receive your e-ticket together with your final itinerary. However, in the case of late bookings, charges or late payment, tickets may be emailed to you.

Special Requests

Where a special request (e.g. diet, room location, twin or double-bedded room, a particular facility at a hotel, flight seat requests and/or particular meals) is an important factor in your choice of holiday, you must advise us when your booking is made. APT will pass your request onto the hotel, airline or other supplier but cannot guarantee that it will be accommodated. APT will also pass on any dietary requests to the airline but we strongly recommend that you check directly with the airline once your tickets have been issued. The provision of any special request does not constitute a term of your contract with us. Confirmation that a special request has been noted or passed on to the supplier or the inclusion of the special request on your confirmation invoice or any other documentation is not confirmation that the request will be met. Unless and until specifically confirmed, all special requests are subject to availability.

Credit and Debit Card Surcharges

If you pay APT by credit or debit card, surcharges will apply. In the case of credit cards, a surcharge of between 1% and 3% (depending on the card used) will be added to the tour price. In the case of debit cards, a charge of 0.5% will be added to the tour price.

Accuracy

APT has endeavoured to ensure that the information provided about accommodation, itineraries etc., is correct to the best of its knowledge at the time of publication. However, advertised descriptions and facilities and prices may change after publication. We recommend that you confirm the details of your chosen holiday package at the time of booking. Additionally, flight times, carriers and routes are given for guidance only as there may be changes. Final details will be shown on your tickets. Holiday package or excursion itineraries may change or be different from those described in our collateral as a result of local conditions, weather conditions, annual events. APT will endeavour

to notify you of any significant changes prior to your departure.

Disruption to Cruising and Itinerary Arrangements

Itineraries are intended as a guide only and are subject to alteration without notice. Alterations may be necessary for various reasons including, without limitation, road, river or weather conditions, strikes, airline schedule changes or other reasons beyond APT's control. If conditions render any routes unsafe for navigation, APT reserves the right to provide alternative services including, but not limited to, accommodation on the docked ship or substitute land arrangements. Itineraries will operate as far as possible as published. However, sometimes for reasons beyond our control, it may be necessary to make alterations to your itinerary.

APT will not be liable for any direct or indirect costs that you incur as a result of any event or other factor beyond our control which necessitates a change in your itinerary. Additionally, you are not entitled to any refund for any alterations to your itinerary that are caused or contributed to by any flood or water level events or such other events which are beyond our control. APT cannot guarantee exact arrival and departure times for carriers and operators used by APT and APT will not be liable for failure to make connections with any other services or attractions beyond its control.

Flight Timings

The flight timings detailed on your confirmation invoice are for guidance only and are subject to alteration and confirmation. Flight timings are set by airlines and affected by events outside our control. Scheduled and charter flight timings, and days of operation are also subject to change. APT will advise you of any significant changes as soon as it is informed by the airline. Minor timing changes will be shown on your flight tickets. Any change in the identity of the airline, flight timings or aircraft type (if advised) will not entitle you to cancel or change to other arrangements without paying any applicable cancellation fees except where specified in these booking conditions.

Out of Date Range Flights

If airlines have not published their schedules or airfares at the time of your booking, APT will estimate the cost of airfares connected with your holiday package. When the airline releases flight inventory and airfares, APT will confirm seats and pricing by sending you an updated invoice. Once flights have been confirmed by you and payment has been received, APT will issue your tickets.

Force Majeure

Force majeure event means the occurrence of an event that is beyond APT's reasonable control and which could not have been reasonably prevented by APT, which includes, but is not limited to: (a) war, armed conflict, criminal damage, riot, civil strife, industrial dispute, terrorist activity or the threat of any such acts; (b) natural disaster (including but not limited to flooding, fire, earthquake, landslide), adverse weather conditions, high or low water levels; (c) nuclear or other industrial accident causing environmental pollution or contamination; or (d) change in law, meaning, enactment, amendment (including repeal) in the law or administration of any law in Australia or any jurisdiction or territory relevant to the booking contract, which includes changes in statute, regulation, determination, by-law, declaration, license and the common law as applicable from time to time, including changes or amendments in regulations or access to services, sites or countries caused by declared epidemic or pandemic events.

Termination of Booking Contract or Change of Travel Arrangements due to Force Majeure

If APT, in its reasonable opinion, considers that any force majeure event prevents APT (whether directly or through its employees, contractors, subcontractors and agents) from lawfully or safely providing any products or services subject of the booking contract with you, APT may immediately by written notice: (a) terminate the booking contract (in whole or in part); or (b) change your travel arrangements as reasonably practicable to ensure your safety and invoice you for any additional costs.

Limitation of Liability in the Event of Force Majeure

In the event that APT cancels or changes your travel arrangements in any way due to a force majeure event, APT will not be liable to you in contract, tort, statute or restitution for any loss (including, but not limited to, loss of deposit or purchase price and loss of enjoyment), damage, costs, charges, expenses or injury resulting from or in connection with (whether directly or indirectly): (a) the cancellation or

change to your travel arrangements; or (b) the force majeure event. APT is not liable to refund any part of the deposit or purchase price paid by you if APT subsequently changes or cancels your travel arrangements in connection with a force majeure event. Force majeure events are unpredictable and beyond APT's control. As you are required to purchase travel insurance to adequately protect yourself against these risks, your policy needs to respond to these risks. You acknowledge and accept that these terms are reasonably necessary to protect the legitimate interests of APT based on expected non-recoverable costs and expenses to be incurred by APT, including but not limited to overhead expenses and works or services performed personally by APT, leading up to the commencement of the holiday package, alternatively prior to the force majeure event.

Data Protection Policy

Any personal information (including sensitive information and health information) that APT obtains and retains from you or about you is necessary for our business purposes. Our Privacy Policy details why we collect this information, who we may disclose it to (including overseas recipients), and the main consequences if we do not collect it. Our Privacy Policy also contains information about how you may seek access to, or correction of, the personal information held about you, and our complaint resolution procedures. Our Privacy Policy is available at www.aptouring.com/privacy-policy or by request to us. By providing personal or sensitive information to us, you are agreeing to the terms of our Privacy Policy.

Limitation of Liability

1. Our holiday packages include the services of independent providers, such as hoteliers, airlines, cruise companies and other operators, who are not agents, servants or employees of APT. Although we take care in selecting the independent service providers and the optional excursions conducted by some independent service providers, APT is not responsible for the conduct of the independent service providers, their servants and agents or for any ramifications of that conduct. Optional excursions may, depending on your holiday package, include activities such as climbing, exploring, bike riding, swimming and snorkelling. You accept and assume the risk involved with these activities.

2. If, in the opinion of any representative of APT, your mental or physical condition, or general behaviour is such as to affect your own health and safety, render you incapable to care for yourself, cause you to become a hazard to yourself or other passengers or result in you becoming objectionable to other passengers or staff, you will not be permitted to embark or continue on the whole or any part of the holiday package. Abuse or harassment of any kind toward crew, contracted suppliers or other guests may result in immediate removal from a holiday package. Guests will be responsible for arranging and paying for their own transport home if they are asked to leave the tour. APT is not liable to you for any costs associated with such decision and you will not be refunded for any part of the holiday package.

3. APT accepts no responsibility for any death, injury, illness, loss (including loss of enjoyment), damage, detention, delay (including mechanical breakdown) beyond its control.

4. Any term, condition or warranty expressed or implied by statute or otherwise in respect of the holiday packages contained in any of our collateral are excluded to the full extent permitted by law. Nothing in these booking conditions excludes, restricts or modifies the application of the Competition and Consumer Act 2010 (Cth) as amended, consolidated, supplemented or replaced.

5. To the full extent permitted by law, APT's liability arising under or in connection with these booking conditions: (a) is limited to the re-supply of the products or services or the payment of the cost of re-supply of the products or services to you; and (b) excludes liability for any indirect or consequential losses suffered by you or any third party, howsoever caused, including but not limited to pure economic loss or any special, extraordinary or punitive damage to you or any other party.

6. Your travel agent will forward deposits and other payments to us on your behalf, but your travel agent is not our agent for the purpose of receipt of monies. Receipt of deposits and subsequent payments by the travel agent does not constitute receipt of those monies by us and the travel agent has no authority expressed or implied to receive monies on our behalf. There is no liability on the part of APT in respect to any monies paid to your travel agent unless and until APT notifies you (by way of a booking confirmation advice or payment receipt advice) that monies have been received by APT. APT reserves the right to cancel any ticket or booking or refuse

to carry any passenger where payment has not been received by APT within the specified time.

7. Specific meal requests are requests only and cannot be guaranteed.

Local Purchases

APT is not responsible for any items you may purchase locally i.e. jewellery/furniture etc. You acknowledge that you are solely responsible for any import duty or freight costs.

Personal Belongings and Lost Items

For security reasons, valuables should be kept to a minimum and packed in your hand luggage along with your medicines. It is your responsibility to look after your property at all times and you must ensure you are adequately covered by comprehensive travel insurance in the event of any loss.

Medical Assistance

APT does not employ medical staff on its tours. If you require medical attention, local medical services can be contacted immediately. You are responsible for all charges that result from visiting a medical facility, or for a medical practitioner visiting you. APT is not responsible for the type or quality of the medical services you may receive.

Smoking

Government regulations forbid smoking in tourist coaches, however, frequent stops are made for those wishing to smoke. Smoking is not permitted in hotel rooms or ship cabins. Requests for smoking/non-smoking rooms will be passed on to hotels but cannot be guaranteed.

Responsible Service of Alcohol

Our staff are trained in the responsible service of alcohol and are obliged by law to refuse service to any guest who, in their reasonable opinion, appears to be intoxicated or behaves in an aggressive or offensive manner.

Service Enquiries

If a problem occurs during your holiday you should, in your own interests, advise your Tour Director so that steps can be taken to resolve the matter. If you remain dissatisfied, any complaint must be made in writing to APT within 30 days.

Luggage Limits

Each passenger is entitled to take one piece of luggage that does not exceed 160cm (63 inches) or weigh more than 20kg (44 pounds). Dimensions for checked baggage are calculated by adding together the width, height and depth of the piece of baggage. An extra charge will be imposed to cover portage handling of any additional luggage. Your Tour Director will advise you of the exact additional charge.

SPECIFIC TERMS AND CONDITIONS FOR EUROPE HOLIDAYS:

A \$1000 security deposit per person, per holiday package for all tours is required within seven days of booking confirmation. A second deposit of \$2,000 per person is required by 31 October 2026. Deposit requirements may vary when booking a special offer. Final payment of the balance of your holiday package price is due 100 days prior to departure unless stated in the terms of a special offer. APT reserves the right to cancel any ticket or booking or, refuse to honour any price or carry any passenger where any payment has not been received by APT within the specified time. All fares and charges are in New Zealand currency. Payment in full is required at time of booking for reservations made less than 100 days before departure from Australia or New Zealand. If APT is unable to confirm your reservation, all monies will be refunded.

Travelling with Minors

Children under 12 years of age are not recommended on tours and cruises. Children under 18 years of age must be accompanied by an adult and share their accommodation with an adult.

Included in Holiday Package Price

All coach and travel, accommodation, airfares (if indicated in individual itinerary), gratuities, airport transfers on the first and last day, sightseeing, specified excursions, meals, admissions, port charges and the services of a Cruise or Tour Director as stated in your itinerary. APT river cruises, expedition cruises and yacht cruises in Europe also include complimentary beverages served on board your ship throughout the day (champagne and premium spirits are not included unless on board a Seabourn vessel).

Not Included in Holiday Package Price

Airfares (unless stated), airport taxes, meals and drinks other than those specified in the itinerary, passport and visa fees, excess baggage, fuel surcharges, gratuities not

specified in your itinerary, vaccinations, government taxes and laundry (unless stated).

Choosing Your Holiday

To maximise your enjoyment of your APT holiday and to ensure that it lives up to your expectations it is important that you choose the right holiday package for you. Our publication contains limited information, however, there is more information on our website at www.aptouring.co.nz and our qualified staff are available to discuss your options.

Gratuities

Gratuities for the land portion of your tour, shore excursions, and on board your cruise are included within the tour price. Gratuities cannot be redeemed for cash.

Hotels

Hotel rooms in Europe are often smaller than those in Australia and New Zealand. In more remote places, hotel standards may not be quite as high as in major centres. APT endeavours to utilise the most suitable accommodation available in each destination. The hotels listed will be used on almost all holiday packages, however, if a change is necessary for any reason, APT will endeavour to ensure that alternative accommodation is of an equivalent standard to those shown.

Twin or Double Rooms

Accommodation in all hotels, regardless of the rating, is in standard rooms (sometimes named superior/deluxe) based on twins or doubles unless otherwise stated.

Solo Travellers

A limited number of single rooms/suites/cabins may be available by request at time of booking your cruise/holiday package. Single room/suites/cabins are not available on certain cruises. Single rooms/suites/cabins are usually smaller than standard twin or double rooms and often only have one single bed.

Cruising – Cabin/Suite/Stateroom Selection

APT will make every effort to assign specific cabins, cabin numbers or locations on the ship if requested. If this is not possible, APT reserves the right to make changes to cabin assignment, within the category booked, without prior notice.

Passengers Needing Assistance

APT welcomes all passengers. Guests with limited mobility are asked to please note the following:

1. Guests with a disability or medical condition requiring assistance must inform APT of any important information relating to their health, mobility and/or fitness which may affect their partial or total participation in the cruise or tour. This information will allow APT to ensure the chosen tour is suitable and meets their needs. Any changes to health, mobility and fitness must also be reported to APT as soon as possible and prior to departure. Where possible, APT will make reasonable adjustments to the tour to assist all guests, however, it cannot do so if the adjustment required would be unreasonable in all of the circumstances, including if such adjustments would affect your safety and/or the safety and/or enjoyment of other passengers.

2. If guests require assistance or care (such as pushing a wheelchair, assistance with dressing or assistance with walking), they must travel with a companion capable of providing the required assistance or care. APT is unable to assist any passenger with walking, dining, boarding or disembarking any transportation vehicles (including river and ocean cruise ships and trains). To safely participate in embarkation and disembarkation you must be able to do so without the need for assistance. Guests must also be able to do so without unreasonably impacting other passengers' safety and/or enjoyment.

3. While APT will make reasonable efforts to accommodate everyone, it is not responsible for any denial of services by any third-party entities it has travel arrangements with, such as carriers, hotels, trains, restaurants or other independent suppliers, or for any additional associated expenses charged by those parties.

4. Please note coaches and minibuses are not equipped with wheelchair ramps. Many ships require the use of stairs to go between decks. Further, side by side docking may require passengers to climb and descend stairs to cross over vessels to disembark and embark at times. APT ships occasionally sail through remote areas that do not have convenient docking facilities. In such circumstances it will be necessary for passengers to negotiate temporary gangplanks, tender boats, riverbanks and uneven surfaces. If the crew decides that it is not safe for a passenger to negotiate such operations, they may require passengers to stay on board. Due to the lack of infrastructure along the riverbanks, and absence of lifts on board vessels, wheelchairs will be of minimal use. Passengers who use a

wheelchair should reconsider travelling on these tours.

Health and Fitness

A good level of fitness and health is required to participate on APT's holiday packages. In some destinations there are extensive sightseeing excursions by foot, which includes the climbing of stairs. Mobility is needed boarding or alighting coaches, river cruise ships and trains. Small Ship Expedition Cruises require you to be able to climb in and out of Zodiacs and some of our excursions may involve wet landings (see Shore Excursions for more information). We recommend a visit to the doctor before travelling to overseas destinations and consult with them regarding any vaccinations which may be required. It is your responsibility to advise APT of any pre-existing medical conditions that may affect the normal conduct of a holiday package and the enjoyment of other passengers. A Health, Fitness & Mobility Questionnaire will be provided and requested to be completed at the time of booking if you advise of any health, fitness or mobility issues. APT is not liable for any injury, illness, or loss of enjoyment which could have been reasonably prevented had we been made aware of a pre-existing condition and been provided an opportunity to review it. We will not be responsible for any costs associated with cancellation penalties or the return of passengers from a tour, and a refund for lost touring cannot be claimed.

Visa and Passports

All passengers must have a valid passport that is valid for at least six months after the holiday package return date. Passengers must consult with the appropriate consulates to ensure that they have any applicable visas for countries included in the holiday package prior to departure. Passengers are solely responsible for meeting necessary passport and visa entry requirements and paying all associated costs. APT is not responsible for delays or missed portions of the holiday package resulting from incorrect travel documents or visas.

Shore Excursions

The timing of shore excursions on all holiday packages may differ slightly for each package. Published times are a guide only and are subject to change without notice. It is impossible for large coaches to be used for some city sightseeing excursions and many towns and cities will be visited by way of walking tours. For river cruising, guests must be able to climb ramps to embark or disembark river cruise ships. Depending on river water levels, these may have a number of steep steps. Venue closures outside of APT's control may affect our ability to operate some excursions. Holiday packages including time in Switzerland and other alpine regions may include excursions to, at times, high altitudes. Small Ship Expedition Cruising holidays require several wet landings, whereby feet and legs may be fully immersed in water during embarkation and disembarkation of Zodiacs or tenders.

IF YOU WANT TO CHANGE OR CANCEL YOUR HOLIDAY

Changes or Additions to Your Holiday

If you want to change any part of your holiday arrangements after the invoice has been issued, we will do our best to make the change, but it may not be possible. Any request for changes must be made in writing by the person who made the original booking, or their travel agent. If it is possible to make the change, it will be subject to an administration charge and payment of any further costs incurred as a result of the change.

Cancellation Policy

The following APT cancellation fees apply (in addition to charges of any independent suppliers e.g. airlines and hotels):

Days of Notice

Prior To Departure

100 days or more
99-61 days

Fee Per Person

Loss of deposit
50% of holiday package price
100% of holiday package price

60 days or less

If your holiday has commenced, 100% of the full holiday package price is charged. There is no refund for unused services or if portions of the holiday package are missed.

Additional cancellation fees may also be charged in respect of accommodation reserved outside the holiday package dates. These cancellation fees are in addition to any fees that may be levied by APT and your travel agent (if any). You acknowledge that the amounts estimated under the Cancellation Policy are reasonable and represent a genuine pre-estimate of APT's loss and are otherwise reasonably necessary to protect the legitimate interests of APT. If you request changes after APT has issued your documents, APT may

charge you an administration and processing fee of \$70 per person in addition to any applicable cancellation fees.

Cancellation of Ticketed Airfares

An APT cancellation fee of \$50 per person applies for ticketed airfares, in addition to any airline cancellation fees that are applicable.

Changes to Ticketed Airfares

If you wish to amend the date or routing on your ticketed air booking, an APT amendment fee of \$30 per person for the first change and \$85 for any subsequent changes will be charged in addition to airline change fees and additional taxes that are applicable. If, for any reason, a name change to a ticketed airfare is required, a \$125 per person name change fee will apply for every change in addition to any applicable airline fees.

IF WE NEED TO CHANGE OR CANCEL YOUR HOLIDAY

If we change or cancel your holiday before your departure, APT endeavours to provide you with all the services confirmed to you at the time of your booking. However, we plan arrangements a long time in advance of your departure date using independent suppliers such as airlines, hotels etc., over whom we have no direct control. On occasion changes do have to be made, and APT reserves the right to cancel or amend holiday packages/ excursions accordingly. All tours require a minimum number of bookings in order to be financially viable and to have a pleasant group atmosphere. In the event adequate numbers cannot be achieved, it may be necessary to cancel a scheduled departure and offer the nearest possible alternative date (or a refund of the monies paid for arrangements made by APT).

ON HOLIDAY

Noise and Vibration

APT takes reasonable steps to minimise noise and vibrations on its cruising vessels. You acknowledge and accept that some noise and vibration may be experienced on aircraft, vehicles, vessels and trains and that APT is not liable to you for any such noise or vibration.

Docking Position

During port stops ships may dock side by side, obstructing views and requiring you to pass through other ships to embark or disembark.

Sun Deck

During passage through locks or under low bridges, or in the case of adverse weather, it may be necessary to close the main Sun Deck for passenger use. In the interests of safety, Sun Deck closures are rigidly enforced. While circumstances will vary and are beyond control, closures of the main Sun Deck may amount to 4-6 days on average per 15-day cruise. The lower Sun Deck may also close for short periods of time.

Seat Allocation on Coach Tours

To ensure all passengers enjoy forward and window facing seats, we have incorporated a daily seat rotation system. This system is not able to be adjusted to suit individual needs under any circumstances.

Wi-Fi Internet – River, Small Ship and Luxury Yacht Cruising

Wi-Fi internet is available without charge aboard your vessel although APT cannot guarantee the consistency of the service throughout the cruise.

Maps Within This Publication

Note that maps may not be to scale.

Images Within This Publication

Some images in this publication are copyright of: Seabourn Venture-Pursuit; MV Lady Eleganza; Josh Robenstone.

Publication No. APT-6461NZ. Itineraries valid from March to December 2027. Publication is valid from October 2025 and supersedes all previous publications.

Australian Pacific Touring Pty. Ltd.
ABN 44 004 684 619.

ATIA accreditation #A10825.

APT CLUB

Rewarding you every time you travel

From the moment you make your first booking, you'll enjoy exclusive benefits designed to elevate every journey. The more you travel with APT, the further you progress through the Club tiers – unlocking additional privileges, personalised recognition and well-earned rewards with every trip.



To find out more, visit
aptouring.co.nz/aptclub



The OneTomorrow Charitable Fund is an initiative established by the APT Travel Group.

OneTomorrow's mission is to make a positive and enduring impact on nature and the communities we touch. Supporting various charitable initiatives around the world, we aim to create immediate and long-term change in important environmental and humanitarian causes.



A World of Difference

At OneTomorrow we believe in travel as a platform for change. Across the APT Travel Group, we've partnered with a range of organisations and implemented initiatives to help protect the environment and ensure the wellbeing of local people wherever we go.

Making Travel Mean More

Working together, we can support not-for-profit organisations to continue helping their communities. Donations through OneTomorrow are tax deductible*, and all donations will be matched dollar for dollar. So together we can double our impact.

With your support, we continue
to make a meaningful impact.



Visit our website to learn more about the causes we support

onetomorrow.com.au

Your Travel Agent



Call 0800 278 687

aptouring.co.nz

Groups: 0800 278 687 | Email: info@aptouring.co.nz